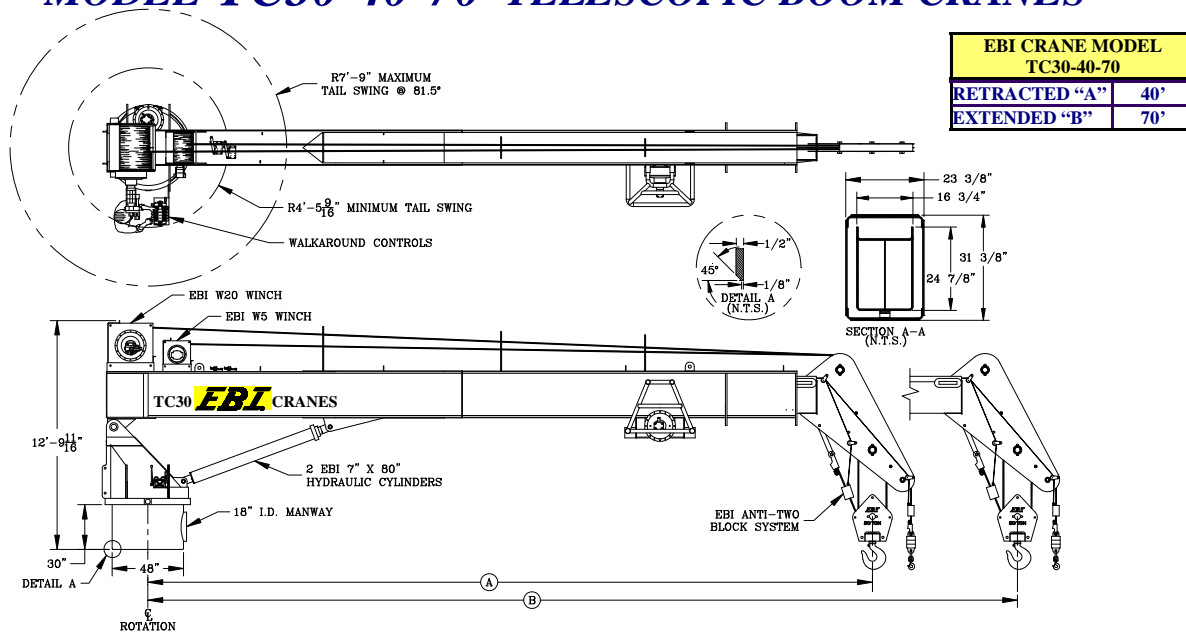


# EBI CRANES

## MODEL TC30-40-70 TELESCOPIC BOOM CRANES



### STANDARD EQUIPMENT:

EBI CRANES ARE LICENSED MONOGRAM CRANES UNDER API-2C SPECIFICATIONS.

EBI CRANES MEET OSHA REQUIREMENTS.

PLANETARY SWING MECHANISM WITH ADJUSTABLE MOUNT, HIGH TORQUE MOTOR AND AUTOMATIC SPRING APPLIED BRAKES.

DOUBLE HYDRAULIC SWIVEL FOR CONTINUOUS ROTATION.

INDUCTION HARDENED CHROME PLATED CYLINDER RODS.

18" I.D. MANWAY WITH BOLTED COVER.

THREE COLOR, SAFE LOAD INDICATOR GAUGE.

RACK AND PINION TELESCOPIC SYSTEM. THERE ARE NO INTERNAL BOOM CYLINDERS.

LOAD LINE WINCH: 2 SPEED MOTOR

THREE COAT MARINE PAINT SYSTEM.

ANTI-FRICTION BEARINGS IN THE SHEAVES.

BRONZE BUSHINGS ON ALL PIVOTING POINTS.

LOAD TEST AT TWICE API OFFBOARD LOAD BEFORE SHIPPING.

EBI PRODUCTS AND SPECIFICATIONS ARE SUBJECT TO CHANGE WITHOUT NOTICE OR OBLIGATIONS.

### OPTIONAL EQUIPMENT:

EBI CRANES TO MEET ABS AND USCG REQUIREMENTS.

CRANE CONTROL LOCATIONS

- PEDESTAL MOUNTED WALKAROUND
- REMOTELY LOCATED
- VARIOUS PLATFORM CONFIGURATIONS
- CAB MOUNTED JOY STICK TYPE

SOLAR/BATTERY POWERED BOOM BEACONS.

BOOM LIGHTING.

COMPLETE HYDRAULIC SAFETY SYSTEM DETECTING THE MOMENT INDUCED BY LOAD ON THE CRANE TO HELP PREVENT OVERLOAD CONDITION.

POWER UNITS CAN BE CRANE MOUNTED OR REMOTELY LOCATED.

POWER UNITS: ELECTRIC MOTOR, AIR MOTOR, OR DIESEL ENGINE (DETROIT DIESEL, CUMMINS, CATERPILLAR, DEUTZ AIR COOLED, ETC.).

DIESEL ENGINE STARTER SYSTEMS: ELECTRIC, AIR OR HYDRAULIC.

AIR/HYDRAULIC OIL HEAT EXCHANGER.

17-4 PH STAINLESS STEEL, HEAT TREATED, CHROME PLATED CYLINDER RODS.

17-4 HH1150 STAINLESS STEEL, HEAT TREATED PINS.

FAST LINE WINCH DESIGNED FOR PERSONNEL HANDLING. WINCH CAPACITY IS 5000 LB. LINE PULL. (1000 LB. FOR PERSONNEL)

ANTI-TWO BLOCK SYSTEM.

EMERGENCY LOAD LOWERING SYSTEM.

## EBI Cranes, LLC.



900 St. Bernard Pkwy. Braithwaite, LA 70040  
 Phone: (504) 682-5245 Fax (985) 386-2084  
 Email: cranes@ebi-inc.com Website: www.ebi-inc.com

# EBI<sup>®</sup> CRANES

## MODEL TC30-40-70 TELESCOPIC BOOM CRANES (U.S. CUSTOMARY UNITS)

MODEL TC30-40-70 API LOAD CHART 40 FT. RETRACTED								BASIC CRANE WEIGHT: 28,478 LBS.
REACH (FT.)	BOOM ANGLE (DEG.)	OFFBOARD LOAD (LBS.)	ONBOARD LOAD (LBS.)	REACH (FT.)	BOOM ANGLE (DEG.)	OFFBOARD LOAD (LBS.)	ONBOARD LOAD (LBS.)	API PEDESTAL REACTIONS (REACTIONS @ 3 X OFFBOARD RATED LOAD) (OTM = OVERTURNING MOMENT)
10	75.5	34900	53050	30	43.0	13650	21175	MAXIMUM OTM = 1,620,400 FT. LBS. CORRESPONDING AXIAL FORCE = 66,270 LBS. MAXIMUM AXIAL FORCE = 137,380 LBS. CORRESPONDING OTM = 1,163,500 FT. LBS.
15	68.5	25550	39025	35	31.0	11200	17500	
20	60.0	19850	30475	40	0.0	6650	10675	
25	52.5	16400	25300					

MODEL TC30-40-70 API LOAD CHART 50 FT. EXTENDED								BASIC CRANE WEIGHT: 28,478 LBS.
REACH (FT.)	BOOM ANGLE (DEG.)	OFFBOARD LOAD (LBS.)	ONBOARD LOAD (LBS.)	REACH (FT.)	BOOM ANGLE (DEG.)	OFFBOARD LOAD (LBS.)	ONBOARD LOAD (LBS.)	API PEDESTAL REACTIONS (REACTIONS @ 3 X OFFBOARD RATED LOAD) (OTM = OVERTURNING MOMENT)
10	78.0	20300	20300	35	46.0	11000	17200	MAXIMUM OTM = 1,615,600 FT. LBS. CORRESPONDING AXIAL FORCE = 56,400 LBS. MAXIMUM AXIAL FORCE = 95,100 LBS. CORRESPONDING OTM = 1,085,300 FT. LBS.
15	72.5	20300	20300	40	37.5	9400	14800	
20	66.5	18900	20300	45	27.0	7900	12550	
25	60.0	15350	20300	50	0.0	4500	7450	
30	53.5	12950	20125					

MODEL TC30-40-70 API LOAD CHART 60 FT. EXTENDED								BASIC CRANE WEIGHT: 28,478 LBS.
REACH (FT.)	BOOM ANGLE (DEG.)	OFFBOARD LOAD (LBS.)	ONBOARD LOAD (LBS.)	REACH (FT.)	BOOM ANGLE (DEG.)	OFFBOARD LOAD (LBS.)	ONBOARD LOAD (LBS.)	API PEDESTAL REACTIONS (REACTIONS @ 3 X OFFBOARD RATED LOAD) (OTM = OVERTURNING MOMENT)
10	80.0	20100	20100	40	48.5	8600	13600	MAXIMUM OTM = 1,600,700 FT. LBS. CORRESPONDING AXIAL FORCE = 52,650 LBS. MAXIMUM AXIAL FORCE = 92,250 LBS. CORRESPONDING OTM = 1,030,300 FT. LBS.
15	75.5	19850	20100	45	42.0	7700	12250	
20	70.5	16000	20100	50	34.0	6650	10675	
25	65.5	13350	20100	55	25.0	5600	9100	
30	60.0	11350	17725	60	0.0	2950	5125	
35	54.5	9850	15475					

MODEL TC30-40-70 API LOAD CHART 70 FT. EXTENDED								BASIC CRANE WEIGHT: 28,478 LBS.
REACH (FT.)	BOOM ANGLE (DEG.)	OFFBOARD LOAD (LBS.)	ONBOARD LOAD (LBS.)	REACH (FT.)	BOOM ANGLE (DEG.)	OFFBOARD LOAD (LBS.)	ONBOARD LOAD (LBS.)	API PEDESTAL REACTIONS (REACTIONS @ 3 X OFFBOARD RATED LOAD) (OTM = OVERTURNING MOMENT)
10	81.5	20100	20100	45	50.0	5250	8575	MAXIMUM OTM = 1,411,700 FT. LBS. CORRESPONDING AXIAL FORCE = 42,290 LBS. MAXIMUM AXIAL FORCE = 92,980 LBS. CORRESPONDING OTM = 680,770 FT. LBS.
15	77.5	16850	20100	50	44.5	4600	7600	
20	73.0	12100	18850	55	38.5	4050	6775	
25	69.0	10050	15775	60	31.5	3600	6100	
30	64.5	8400	13300	65	22.5	3200	5500	
35	60.0	7100	11350	70	0.0	1800	3400	
40	55.5	6200	10000					

IN ACCORDANCE WITH API-2C, VALUES SHOWN ARE ACTUAL HOOK LOAD (WEIGHT OF BLOCK AND HOOK EXCLUDED).  
 LOAD LINE BLOCK WEIGHT IS 1300 LBS.  
 LOAD LINE (4 PART LINE): 1" 6X25 EIPS IWRC; 100,000 LB. BREAKING STRENGTH; 20,000 LB. WORKING STRENGTH.  
 FAST LINE BLOCK WEIGHT IS 100 LBS.  
 FAST LINE (1 PART LINE): 9/16" 19X7 EIPS IWRC; 25,000 LB. BREAKING STRENGTH; 5,000 LB. WORKING STRENGTH.  
 ONBOARD LOAD = 1.5 X OFFBOARD LOAD.  
 PEDESTAL REACTIONS ARE BASED ON THREE TIMES THE OFFBOARD LOAD PLUS DEAD LOAD

# EBI<sup>®</sup> CRANES

## MODEL TC30-40-70 TELESCOPIC BOOM CRANES (INTERNATIONAL METRIC UNITS)

MODEL TC30-40-70 API LOAD CHART 12.2 METERS RETRACTED								BASIC CRANE WEIGHT: 12,917 KGS.
REACH (METERS)	BOOM ANGLE (DEG.)	OFFBOARD LOAD (KGS.)	ONBOARD LOAD (KGS.)	REACH (METERS)	BOOM ANGLE (DEG.)	OFFBOARD LOAD (KGS.)	ONBOARD LOAD (KGS.)	API PEDESTAL REACTIONS (REACTIONS @ 3 X OFFBOARD RATED LOAD) (OTM = OVERTURNING MOMENT)
3.0	75.5	15830	24063	9.1	43.0	6192	9605	MAXIMUM OTM = 224 TON METERS CORRESPONDING AXIAL FORCE = 30,060 KGS. MAXIMUM AXIAL FORCE = 62,315 KGS. CORRESPONDING OTM = 161 TON METERS
4.6	68.5	11589	17701	10.7	31.0	5080	7938	
6.1	60.0	9004	13823	12.2	0.0	3016	4842	
7.6	52.5	7439	11478					

MODEL TC30-40-70 API LOAD CHART 15.2 METERS EXTENDED								BASIC CRANE WEIGHT: 12,917 KGS.
REACH (METERS)	BOOM ANGLE (DEG.)	OFFBOARD LOAD (KGS.)	ONBOARD LOAD (KGS.)	REACH (METERS)	BOOM ANGLE (DEG.)	OFFBOARD LOAD (KGS.)	ONBOARD LOAD (KGS.)	API PEDESTAL REACTIONS (REACTIONS @ 3 X OFFBOARD RATED LOAD) (OTM = OVERTURNING MOMENT)
3.0	78.0	9208	9208	10.7	46.0	4990	7802	MAXIMUM OTM = 223 TON METERS CORRESPONDING AXIAL FORCE = 25,583 KGS. MAXIMUM AXIAL FORCE = 43,137 KGS. CORRESPONDING OTM = 150 TON METERS
4.6	72.5	9208	9208	12.2	37.5	4264	6713	
6.1	66.5	8573	9208	13.7	27.0	3583	5693	
7.6	60.0	6962	9208	15.2	0.0	2041	3379	
9.1	53.5	5874	9129					

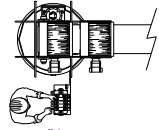
MODEL TC30-40-70 API LOAD CHART 18.3 METERS EXTENDED								BASIC CRANE WEIGHT: 12,917 KGS.
REACH (METERS)	BOOM ANGLE (DEG.)	OFFBOARD LOAD (KGS.)	ONBOARD LOAD (KGS.)	REACH (METERS)	BOOM ANGLE (DEG.)	OFFBOARD LOAD (KGS.)	ONBOARD LOAD (KGS.)	API PEDESTAL REACTIONS (REACTIONS @ 3 X OFFBOARD RATED LOAD) (OTM = OVERTURNING MOMENT)
3.0	80.0	9117	9117	12.2	48.5	3901	6169	MAXIMUM OTM = 221 TON METERS CORRESPONDING AXIAL FORCE = 23,882 KGS. MAXIMUM AXIAL FORCE = 41,844 KGS. CORRESPONDING OTM = 142 TON METERS
4.6	75.5	9004	9117	13.7	42.0	3493	5557	
6.1	70.5	7258	9117	15.2	34.0	3016	4842	
7.6	65.5	6055	9117	16.8	25.0	2540	4128	
9.1	60.0	5148	8040	18.3	0.0	1338	2325	
10.7	54.5	4468	7019					

MODEL TC30-40-70 API LOAD CHART 21.3 METERS EXTENDED								BASIC CRANE WEIGHT: 12,917 KGS.
REACH (METERS)	BOOM ANGLE (DEG.)	OFFBOARD LOAD (KGS.)	ONBOARD LOAD (KGS.)	REACH (METERS)	BOOM ANGLE (DEG.)	OFFBOARD LOAD (KGS.)	ONBOARD LOAD (KGS.)	API PEDESTAL REACTIONS (REACTIONS @ 3 X OFFBOARD RATED LOAD) (OTM = OVERTURNING MOMENT)
3.0	81.5	9117	9117	13.7	50.0	2381	3890	MAXIMUM OTM = 195 TON METERS CORRESPONDING AXIAL FORCE = 19,182 KGS. MAXIMUM AXIAL FORCE = 42,175 KGS. CORRESPONDING OTM = 94 TON METERS
4.6	77.5	7643	9117	15.2	44.5	2087	3447	
6.1	73.0	5488	8550	16.8	38.5	1837	3073	
7.6	69.0	4559	7155	18.3	31.5	1633	2767	
9.1	64.5	3810	6033	19.8	22.5	1452	2495	
10.7	60.0	3221	5148	21.3	0.0	816	1542	
12.2	55.5	2812	4536					

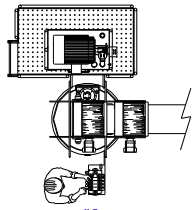
IN ACCORDANCE WITH API-2C, VALUES SHOWN ARE ACTUAL HOOK LOAD (WEIGHT OF BLOCK AND HOOK EXCLUDED).  
 LOAD LINE BLOCK WEIGHT IS 590 KGS.  
 LOAD LINE (4 PART LINE): 1" 6X25 EIPS IWRC; 45,359 KGS. BREAKING STRENGTH; 9,072 KGS. WORKING STRENGTH.  
 FAST LINE BLOCK WEIGHT IS 45.4 KGS.  
 FAST LINE (1 PART LINE): 9/16" 19X7 EIPS IWRC; 11,340 KGS. BREAKING STRENGTH; 2,268 KGS. WORKING STRENGTH.  
 ONBOARD LOAD = 1.5 X OFFBOARD LOAD.  
 PEDESTAL REACTIONS ARE BASED ON THREE TIMES THE OFFBOARD LOAD PLUS DEAD LOAD

# EBI CRANES

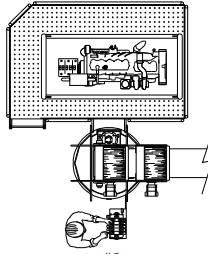
## MODEL TC30-40-70 CRANES AVAILABLE CONFIGURATIONS



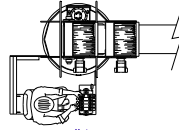
#1  
WALK-AROUND  
CONTROLS



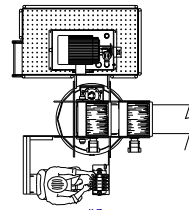
#2  
WALK-AROUND CONTROLS  
WITH ELECTRIC  
POWER UNIT PLATFORM



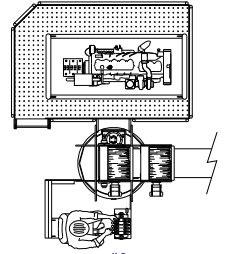
#3  
WALK-AROUND CONTROLS  
WITH ENGINE DRIVEN  
HYDRAULIC POWER UNIT  
PLATFORM



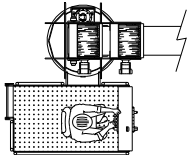
#4  
OPERATOR'S SEAT  
WITH CONTROLS



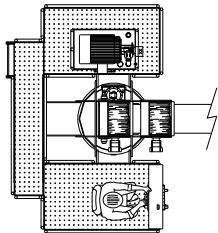
#5  
OPERATOR'S SEAT WITH  
CONTROLS AND ELECTRIC  
POWER UNIT PLATFORM



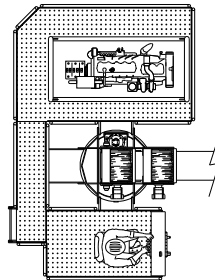
#6  
OPERATOR'S SEAT WITH  
CONTROLS AND ENGINE  
DRIVEN HYDRAULIC POWER  
UNIT PLATFORM



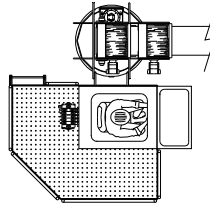
#7  
OPEN-ONBOARD  
CONTROLS WITH  
PLATFORM



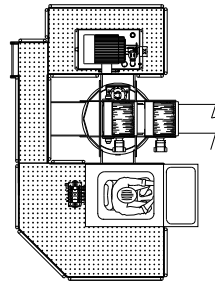
#8  
OPEN-ONBOARD CONTROLS  
AND ELECTRIC POWER  
UNIT WITH PLATFORMS



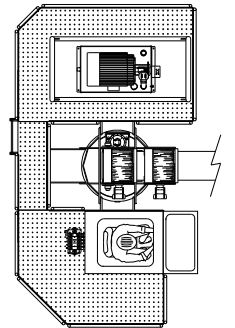
#9  
OPEN-ONBOARD CONTROLS  
AND ENGINE DRIVEN  
HYDRAULIC POWER UNIT  
WITH PLATFORMS



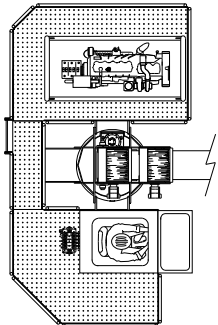
#10  
OPERATOR'S CAB  
WITH PLATFORM



#11  
OPERATOR'S CAB AND  
ELECTRIC POWER UNIT  
WITH PLATFORMS



#12  
OPERATOR'S CAB  
AND ELECTRIC POWER  
UNIT WITH PLATFORMS



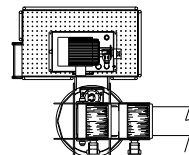
#13  
OPERATOR'S CAB AND  
ENGINE DRIVEN HYDRAULIC  
POWER UNIT WITH PLATFORMS

CONTROLS AVAILABLE LEFT HAND OR RIGHT HAND  
OPERATION WITH OR WITHOUT PLATFORMS.

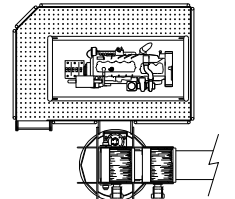
CAB CONTROLS AVAILABLE IN 3 SIZES.

REMOTE CONTROL OPERATION AND/OR REMOTE  
POWER UNIT AVAILABLE.

OPTION #15 AVAILABLE WITH ENGINE DRIVE  
HYDRAULIC POWER UNIT OR LARGE  
ELECTRIC MOTOR.



#14  
ELECTRIC POWER UNIT  
WITH PLATFORM



#15  
ENGINE DRIVEN  
HYDRAULIC POWER UNIT  
WITH PLATFORM

CONFIGURATIONS SHOWN FOR REFERENCE ONLY

### TAIL SWING CHART @ 0° BOOM ANGLE \*

CONFIGURATION	MAXIMUM TAIL SWING	CONFIGURATION	MAXIMUM TAIL SWING	CONFIGURATION	MAXIMUM TAIL SWING	CONFIGURATION	MAXIMUM TAIL SWING
1	4'-6" Radius	5	7'-2" Radius	9	9'-6" Radius	13	9'-6" Radius
2	7'-2" Radius	6	9'-6" Radius	10	9'-1" Radius	14	7'-2" Radius
3	9'-6" Radius	7	7'-2" Radius	11	9'-1" Radius	15	9'-6" Radius
4	5'-4" Radius	8	7'-2" Radius	12	9'-6" Radius		

\*TAIL SWING VALUES MAY BE EXCEEDED DEPENDING UPON WINCH MOUNT OPTIONS

### ELEVATING BOATS LLC

Corporate/EBI Liftboats, LLC. - 124 Finish Line Lane - Houma, LA 70360

Phone: (985) 868-9655 Fax: (985) 868-9656

EBI Cranes, LLC. - 900 St. Bernard Pkwy. - Braithwaite, LA 70040

Phone: (504) 682-5245 Fax: (504) 682-5296

EBI Machining, LLC. - 40495 West I-55 Service Road - Ponchatoula, LA 70454

Phone: (985) 386-2053 Fax: (985) 386-2084

Email: postmaster@ebi-inc.com

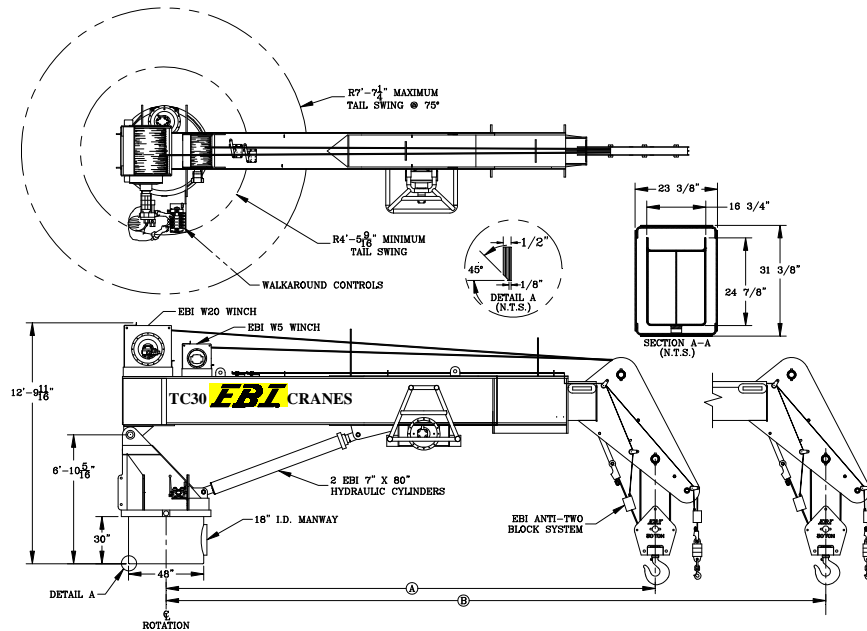
Website: www.ebi-inc.com



08REV080514

# EBI CRANES

## MODEL TC30-25-40 TELESCOPIC BOOM CRANES



EBI CRANE MODEL TC30-25-40	
RETRACTED "A"	25'
EXTENDED "B"	40'

### STANDARD EQUIPMENT:

EBI CRANES ARE LICENSED MONOGRAM CRANES UNDER API-2C SPECIFICATIONS.
EBI CRANES MEET OSHA REQUIREMENTS.
PLANETARY SWING MECHANISM WITH ADJUSTABLE MOUNT, HIGH TORQUE MOTOR AND AUTOMATIC SPRING APPLIED BRAKES.
DOUBLE HYDRAULIC SWIVEL FOR CONTINUOUS ROTATION.
INDUCTION HARDENED CHROME PLATED CYLINDER RODS.
18" I.D. MANWAY WITH BOLTED COVER.
THREE COLOR, SAFE LOAD INDICATOR GAUGE.
RACK AND PINION TELESCOPIC SYSTEM. THERE ARE NO INTERNAL BOOM CYLINDERS.
LOAD LINE WINCH: 2 SPEED MOTOR
THREE COAT MARINE PAINT SYSTEM.
ANTI-FRICTION BEARINGS IN THE SHEAVES.
BRONZE BUSHINGS ON ALL PIVOTING POINTS.
LOAD TEST AT TWICE API OFFBOARD LOAD BEFORE SHIPPING.

EBI PRODUCTS AND SPECIFICATIONS ARE SUBJECT TO CHANGE WITHOUT NOTICE OR OBLIGATIONS.

### OPTIONAL EQUIPMENT:

EBI CRANES TO MEET ABS AND USCG REQUIREMENTS.
CRANE CONTROL LOCATIONS
- PEDESTAL MOUNTED WALKAROUND
- REMOTELY LOCATED
- VARIOUS PLATFORM CONFIGURATIONS
- CAB MOUNTED JOY STICK TYPE
SOLAR/BATTERY POWERED BOOM BEACONS.
BOOM LIGHTING.
COMPLETE HYDRAULIC SAFETY SYSTEM DETECTING THE MOMENT INDUCED BY LOAD ON THE CRANE TO HELP PREVENT OVERLOAD CONDITION.
POWER UNITS CAN BE CRANE MOUNTED OR REMOTELY LOCATED.
POWER UNITS: ELECTRIC MOTOR, AIR MOTOR, OR DIESEL ENGINE (DETROIT DIESEL, CUMMINS, CATERPILLAR, DEUTZ AIR COOLED, ETC.).
DIESEL ENGINE STARTER SYSTEMS: ELECTRIC, AIR OR HYDRAULIC.
AIR/HYDRAULIC OIL HEAT EXCHANGER.
17-4 PH STAINLESS STEEL, HEAT TREATED, CHROME PLATED CYLINDER RODS.
17-4 HH1150 STAINLESS STEEL, HEAT TREATED PINS.
FAST LINE WINCH DESIGNED FOR PERSONNEL HANDLING. WINCH CAPACITY IS 5000 LB. LINE PULL. (1000 LB. FOR PERSONNEL)
ANTI-TWO BLOCK SYSTEM.
EMERGENCY LOAD LOWERING SYSTEM.

## EBI Cranes, LLC.



900 St. Bernard Pkwy. Braithwaite, LA 70040  
 Phone: (504) 682-5245 Fax (985) 386-2084  
 Email: cranes@ebi-inc.com Website: www.ebi-inc.com



# EBI<sup>®</sup> CRANES

## MODEL TC30-25-40 TELESCOPIC BOOM CRANES (U.S. CUSTOMARY UNITS)

MODEL TC30-25-40 API LOAD CHART 25 FT. RETRACTED								BASIC CRANE WEIGHT: 23,671 LBS.
REACH (FT.)	BOOM ANGLE (DEG.)	OFFBOARD LOAD (LBS.)	ONBOARD LOAD (LBS.)	REACH (FT.)	BOOM ANGLE (DEG.)	OFFBOARD LOAD (LBS.)	ONBOARD LOAD (LBS.)	API PEDESTAL REACTIONS (REACTIONS @ 3 X OFFBOARD RATED LOAD) (OTM = OVERTURNING MOMENT)
10	66.5	40090	60840	25	0.0	15090	23340	MAXIMUM OTM = 1,552,900 FT. LBS. CORRESPONDING AXIAL FORCE = 95,690 LBS.
15	54.0	30090	45840					MAXIMUM AXIAL FORCE = 148,200 LBS.
20	38.0	22590	34590					CORRESPONDING OTM = 1,285,500 FT. LBS.

MODEL TC30-25-40 API LOAD CHART 30 FT. EXTENDED								BASIC CRANE WEIGHT: 23,671 LBS.
REACH (FT.)	BOOM ANGLE (DEG.)	OFFBOARD LOAD (LBS.)	ONBOARD LOAD (LBS.)	REACH (FT.)	BOOM ANGLE (DEG.)	OFFBOARD LOAD (LBS.)	ONBOARD LOAD (LBS.)	API PEDESTAL REACTIONS (REACTIONS @ 3 X OFFBOARD RATED LOAD) (OTM = OVERTURNING MOMENT)
10	70.5	27290	27290	25	35.0	17340	26715	MAXIMUM OTM = 1,536,900 FT. LBS. CORRESPONDING AXIAL FORCE = 79,930 LBS.
15	60.0	24440	27290	30	0.0	12090	18840	MAXIMUM AXIAL FORCE = 109,780 LBS.
20	49.0	22090	27290					CORRESPONDING OTM = 881,820 FT. LBS.

MODEL TC30-25-40 API LOAD CHART 35 FT. EXTENDED								BASIC CRANE WEIGHT: 23,671 LBS.
REACH (FT.)	BOOM ANGLE (DEG.)	OFFBOARD LOAD (LBS.)	ONBOARD LOAD (LBS.)	REACH (FT.)	BOOM ANGLE (DEG.)	OFFBOARD LOAD (LBS.)	ONBOARD LOAD (LBS.)	API PEDESTAL REACTIONS (REACTIONS @ 3 X OFFBOARD RATED LOAD) (OTM = OVERTURNING MOMENT)
10	73.0	22490	27290	25	45.0	13840	21465	MAXIMUM OTM = 1,414,800 FT. LBS. CORRESPONDING AXIAL FORCE = 65,380 LBS.
15	64.5	18340	27290	30	32.0	12490	19440	MAXIMUM AXIAL FORCE = 95,380 LBS.
20	56.0	16090	24840	35	0.0	9840	15465	CORRESPONDING OTM = 744,410 FT. LBS.

MODEL TC30-25-40 API LOAD CHART 40 FT. EXTENDED								BASIC CRANE WEIGHT: 23,671 LBS.
REACH (FT.)	BOOM ANGLE (DEG.)	OFFBOARD LOAD (LBS.)	ONBOARD LOAD (LBS.)	REACH (FT.)	BOOM ANGLE (DEG.)	OFFBOARD LOAD (LBS.)	ONBOARD LOAD (LBS.)	API PEDESTAL REACTIONS (REACTIONS @ 3 X OFFBOARD RATED LOAD) (OTM = OVERTURNING MOMENT)
10	75.0	18590	26590	30	42.0	9490	14940	MAXIMUM OTM = 1,396,800 FT. LBS. CORRESPONDING AXIAL FORCE = 52,480 LBS.
15	68.0	15090	23340	35	30.0	8340	13530	MAXIMUM AXIAL FORCE = 83,680 LBS.
20	60.0	12390	19290	40	0.0	8190	12990	CORRESPONDING OTM = 625,330 FT. LBS.
25	52.0	11090	17340					

IN ACCORDANCE WITH API-2C, VALUES SHOWN ARE ACTUAL HOOK LOAD (WEIGHT OF BLOCK AND HOOK EXCLUDED).

LOAD LINE BLOCK WEIGHT IS 1300 LBS.

LOAD LINE (4 PART LINE): 1" 6X25 EIPS IWRC; 100,000 LB. BREAKING STRENGTH; 20,000 LB. WORKING STRENGTH.

FAST LINE BLOCK WEIGHT IS 110 LBS.

FAST LINE (1 PART LINE): 9/16" 19X7 EIPS IWRC; 25,000 LB. BREAKING STRENGTH; 5,000 LB. WORKING STRENGTH.

ONBOARD LOAD = 1.5 X OFFBOARD LOAD.

PEDESTAL REACTIONS ARE BASED ON THREE TIMES THE OFFBOARD LOAD PLUS DEAD LOAD

# EBI CRANES

## MODEL TC30-25-40 TELESCOPIC BOOM CRANES (INTERNATIONAL METRIC UNITS)

MODEL TC30-25-40 API LOAD CHART 7.6 METERS RETRACTED								BASIC CRANE WEIGHT: 10,737 KGS.
REACH (METERS)	BOOM ANGLE (DEG.)	OFFBOARD LOAD (KGS.)	ONBOARD LOAD (KGS.)	REACH (METERS)	BOOM ANGLE (DEG.)	OFFBOARD LOAD (KGS.)	ONBOARD LOAD (KGS.)	API PEDESTAL REACTIONS (REACTIONS @ 3 X OFFBOARD RATED LOAD) (OTM = OVERTURNING MOMENT)
3.0	66.5	18185	27597	7.6	0.0	6845	10587	MAXIMUM OTM = 215 TON METERS CORRESPONDING AXIAL FORCE = 43,404 KGS.
4.6	54.0	13649	20793					MAXIMUM AXIAL FORCE = 67,222 KGS.
6.1	38.0	10247	15690					CORRESPONDING OTM = 178 TON METERS

MODEL TC30-25-40 API LOAD CHART 9.1 METERS EXTENDED								BASIC CRANE WEIGHT: 10,737 KGS.
REACH (METERS)	BOOM ANGLE (DEG.)	OFFBOARD LOAD (KGS.)	ONBOARD LOAD (KGS.)	REACH (METERS)	BOOM ANGLE (DEG.)	OFFBOARD LOAD (KGS.)	ONBOARD LOAD (KGS.)	API PEDESTAL REACTIONS (REACTIONS @ 3 X OFFBOARD RATED LOAD) (OTM = OVERTURNING MOMENT)
3.0	70.5	12378	12378	7.6	35.0	7865	12118	MAXIMUM OTM = 213 TON METERS CORRESPONDING AXIAL FORCE = 36,256 KGS.
4.6	60.0	11086	12378	9.1	0.0	5484	8546	MAXIMUM AXIAL FORCE = 49,795 KGS.
6.1	49.0	10020	12378					CORRESPONDING OTM = 122 TON METERS

MODEL TC30-25-40 API LOAD CHART 10.7 METERS EXTENDED								BASIC CRANE WEIGHT: 10,737 KGS.
REACH (METERS)	BOOM ANGLE (DEG.)	OFFBOARD LOAD (KGS.)	ONBOARD LOAD (KGS.)	REACH (METERS)	BOOM ANGLE (DEG.)	OFFBOARD LOAD (KGS.)	ONBOARD LOAD (KGS.)	API PEDESTAL REACTIONS (REACTIONS @ 3 X OFFBOARD RATED LOAD) (OTM = OVERTURNING MOMENT)
3.0	73.0	10201	12378	7.6	45.0	6278	9736	MAXIMUM OTM = 196 TON METERS CORRESPONDING AXIAL FORCE = 29,656 KGS.
4.6	64.5	8319	12378	9.1	32.0	5665	8818	MAXIMUM AXIAL FORCE = 43,264 KGS.
6.1	56.0	7298	11267	10.7	0.0	4463	7015	CORRESPONDING OTM = 103 TON METERS

MODEL TC30-25-40 API LOAD CHART 12.2 METERS EXTENDED								BASIC CRANE WEIGHT: 10,737 KGS.
REACH (METERS)	BOOM ANGLE (DEG.)	OFFBOARD LOAD (KGS.)	ONBOARD LOAD (KGS.)	REACH (METERS)	BOOM ANGLE (DEG.)	OFFBOARD LOAD (KGS.)	ONBOARD LOAD (KGS.)	API PEDESTAL REACTIONS (REACTIONS @ 3 X OFFBOARD RATED LOAD) (OTM = OVERTURNING MOMENT)
3.0	75.0	8432	12061	9.1	42.0	4305	6777	MAXIMUM OTM = 193 TON METERS CORRESPONDING AXIAL FORCE = 23,805 KGS.
4.6	68.0	6845	10587	10.7	30.0	3783	6137	MAXIMUM AXIAL FORCE = 37,956 KGS.
6.1	60.0	5520	8750	12.2	0.0	3715	5892	CORRESPONDING OTM = 86.5 TON METERS
7.6	52.0	5030	7865					

IN ACCORDANCE WITH API-2C, VALUES SHOWN ARE ACTUAL HOOK LOAD (WEIGHT OF BLOCK AND HOOK EXCLUDED).  
LOAD LINE BLOCK WEIGHT IS 590 KGS.

LOAD LINE (4 PART LINE): 1" 6X25 EIPS IWRC; 45,360 KGS. BREAKING STRENGTH; 9,072 KGS. WORKING STRENGTH.

FAST LINE BLOCK WEIGHT IS 50 KGS.

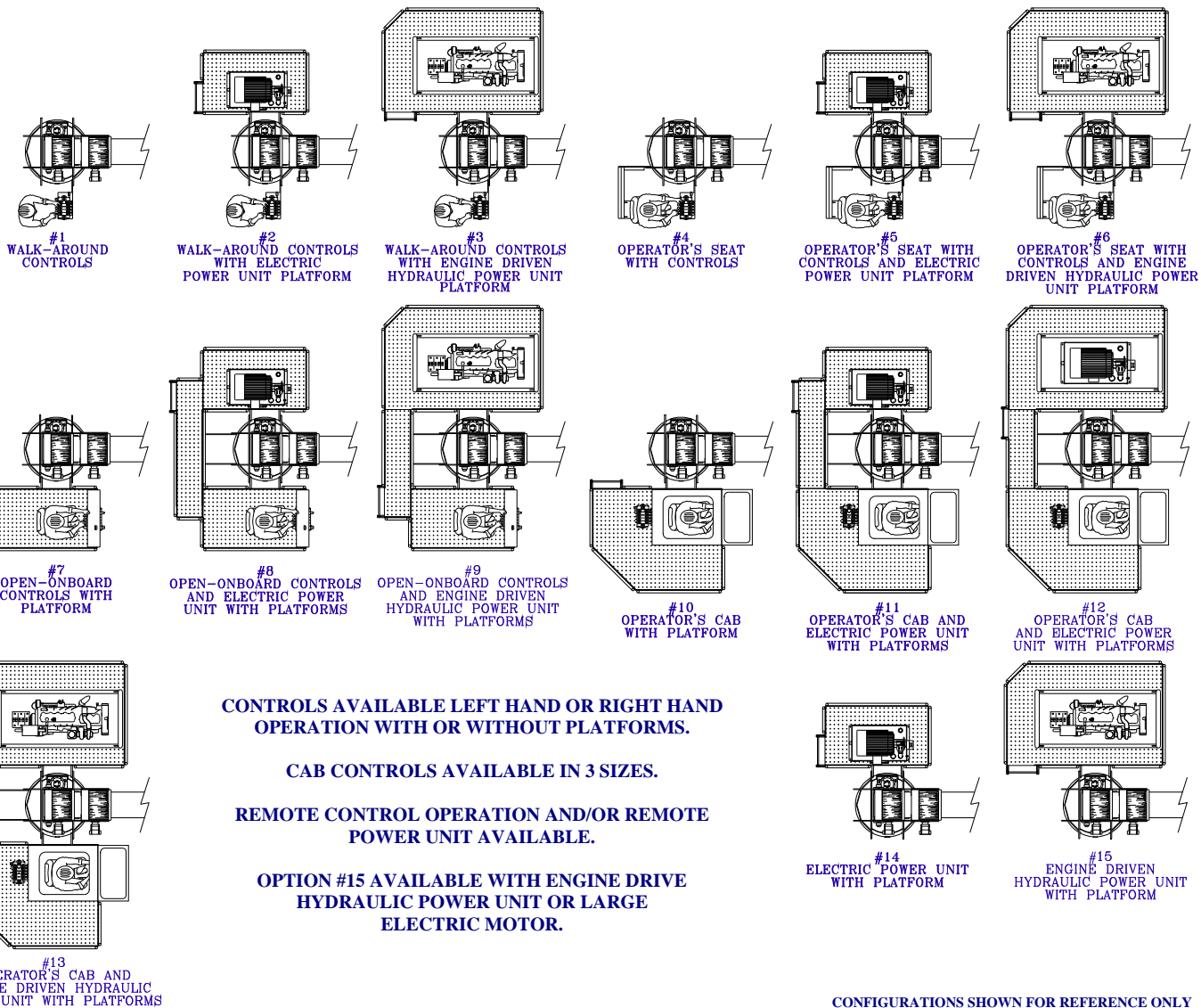
FAST LINE (1 PART LINE): 9/16" 19X7 EIPS IWRC; 11,400 KGS. BREAKING STRENGTH; 2,268 KGS. WORKING STRENGTH.

ONBOARD LOAD = 1.5 X OFFBOARD LOAD.

PEDESTAL REACTIONS ARE BASED ON THREE TIMES THE OFFBOARD LOAD PLUS DEAD LOAD

# EBI<sup>®</sup> CRANES

## MODEL TC30-25-40 CRANES AVAILABLE CONFIGURATIONS



### TAIL SWING CHART @ 0° BOOM ANGLE \*

CONFIGURATION	MAXIMUM TAIL SWING	CONFIGURATION	MAXIMUM TAIL SWING	CONFIGURATION	MAXIMUM TAIL SWING	CONFIGURATION	MAXIMUM TAIL SWING
1	4'-6" Radius	5	7'-2" Radius	9	9'-6" Radius	13	9'-6" Radius
2	7'-2" Radius	6	9'-6" Radius	10	9'-1" Radius	14	7'-2" Radius
3	9'-6" Radius	7	7'-2" Radius	11	9'-1" Radius	15	9'-6" Radius
4	5'-4" Radius	8	7'-2" Radius	12	9'-6" Radius		

\*TAIL SWING VALUES MAY BE EXCEEDED DEPENDING UPON WINCH MOUNT OPTIONS

## ELEVATING BOATS LLC

Corporate/EBI Liftboats, LLC. - 124 Finish Line Lane - Houma, LA 70360

Phone: (985) 868-9655 Fax: (985) 868-9656

EBI Cranes, LLC. - 900 St. Bernard Pkwy. - Braithwaite, LA 70040

Phone: (504) 682-5245 Fax: (504) 682-5296

EBI Machining, LLC. - 40495 West I-55 Service Road - Ponchatoula, LA 70454

Phone: (985) 386-2053 Fax: (985) 386-2084

Email: [postmaster@ebi-inc.com](mailto:postmaster@ebi-inc.com)

Website: [www.ebi-inc.com](http://www.ebi-inc.com)

