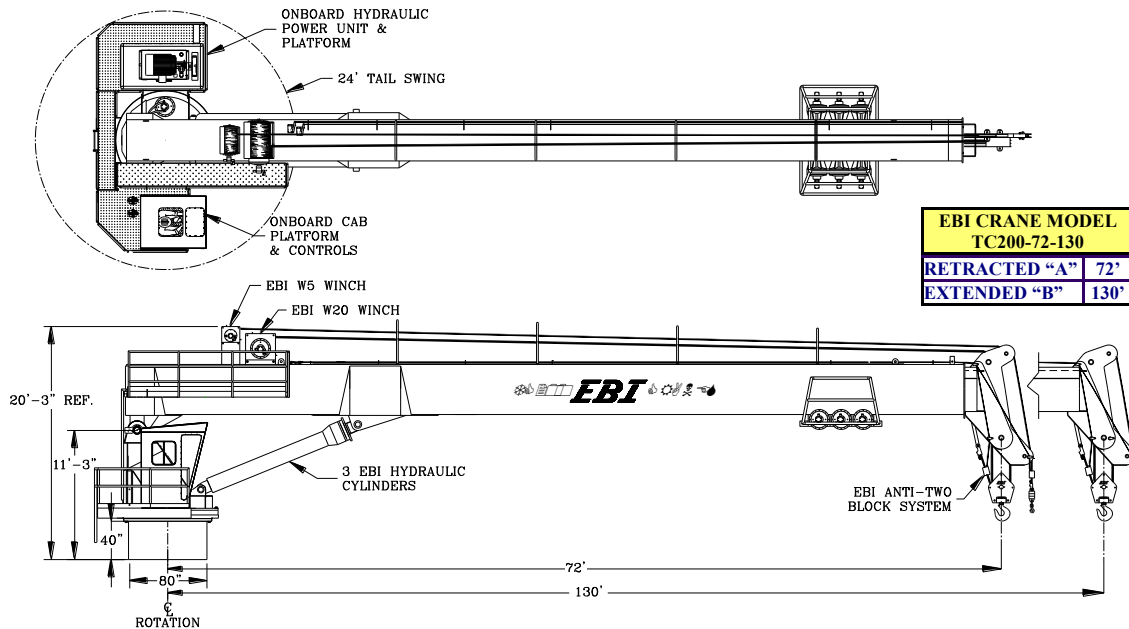


EBI CRANES

MODEL TC200-72-130 TELESCOPIC BOOM CRANES



EBI CRANE MODEL TC200-72-130	
RETRACTED "A"	72'
EXTENDED "B"	130'

STANDARD EQUIPMENT:

EBI CRANES ARE LICENSED MONOGRAM CRANES UNDER API-2C SPECIFICATIONS.

EBI CRANES MEET OSHA REQUIREMENTS.

PLANETARY SWING MECHANISM WITH ADJUSTABLE MOUNT, HIGH TORQUE MOTOR AND AUTOMATIC SPRING APPLIED BRAKES.

DOUBLE HYDRAULIC SWIVEL FOR CONTINUOUS ROTATION.

INDUCTION HARDENED CHROME PLATED CYLINDER RODS.

18" I.D. MANWAY WITH BOLTED COVER.

THREE COLOR, SAFE LOAD INDICATOR GAUGE.

RACK AND PINION TELESCOPIC SYSTEM. THERE ARE NO INTERNAL BOOM CYLINDERS.

LOAD LINE WINCH: 2 SPEED MOTOR.

THREE COAT MARINE PAINT SYSTEM.

ANTI-FRICTION BEARINGS IN THE SHEAVES.

BRONZE BUSHINGS ON ALL PIVOTING POINTS.

LOAD TEST AT TWICE API OFFBOARD LOAD BEFORE SHIPPING.

EBI PRODUCTS AND SPECIFICATIONS ARE SUBJECT TO CHANGE WITHOUT NOTICE OR OBLIGATIONS.

OPTIONAL EQUIPMENT:

EBI CRANES TO MEET ABS AND USCG REQUIREMENTS.

CRANE CONTROL LOCATIONS

- PEDESTAL MOUNTED WALKAROUND
- REMOTELY LOCATED
- VARIOUS PLATFORM CONFIGURATIONS
- CAB MOUNTED JOY STICK TYPE

SOLAR/BATTERY POWERED BOOM BEACONS.

BOOM LIGHTING.

COMPLETE HYDRAULIC SAFETY SYSTEM DETECTING THE MOMENT INDUCED BY LOAD ON THE CRANE TO HELP PREVENT OVERLOAD CONDITION.

POWER UNITS CAN BE CRANE MOUNTED OR REMOTELY LOCATED.

POWER UNITS: ELECTRIC MOTOR, AIR MOTOR, OR DIESEL ENGINE (DETROIT DIESEL, CUMMINS, CATERPILLAR, DEUTZ AIR COOLED, ETC.).

DIESEL ENGINE STARTER SYSTEMS: ELECTRIC, AIR OR HYDRAULIC.

AIR/HYDRAULIC OIL HEAT EXCHANGER.

17-4 PH STAINLESS STEEL, HEAT TREATED, CHROME PLATED CYLINDER RODS.

17-4 HH1150 STAINLESS STEEL, HEAT TREATED PINS.

FAST LINE WINCH DESIGNED FOR PERSONNEL HANDLING. WINCH CAPACITY IS 5000 LB. LINE PULL. (1000 LB. FOR PERSONNEL)

ANTI-TWO BLOCK SYSTEM.

EMERGENCY LOAD LOWERING SYSTEM.

EBI Cranes, LLC.



900 St. Bernard Pkwy. Braithwaite, LA 70040
 Phone: (504) 682-5245 Fax (985) 386-2084
 Email: cranes@ebi-inc.com Website: www.ebi-inc.com

EBI CRANES

MODEL TC200-72-130 TELESCOPIC BOOM CRANES (U.S. CUSTOMARY UNITS)

MODEL TC200-72-130 API LOAD CHART 73 FT. RETRACTED BASIC CRANE WEIGHT: 173,000 LBS.

REACH (FT.)	BOOM ANGLE (DEG.)	OFFBOARD LOAD (LBS.)	ONBOARD LOAD (LBS.)	REACH (FT.)	BOOM ANGLE (DEG.)	OFFBOARD LOAD (LBS.)	ONBOARD LOAD (LBS.)	API PEDESTAL REACTIONS (REACTIONS @ 3 X OFFBOARD RATED LOAD) (OTM = OVERTURNING MOMENT)
12	80.0	200000	200000	45	51.7	95100	142650	MAXIMUM OTM = 15,916,642 FT. LBS. CORRESPONDING AXIAL FORCE = 551,950 LBS. MAXIMUM AXIAL FORCE = 763,000 LBS. CORRESPONDING OTM = 9,314,045 FT. LBS.
15	78.5	200000	200000	50	46.5	78350	117525	
20	74.1	200000	200000	55	40.8	74300	111450	
25	69.2	167525	200000	60	34.2	66250	99375	
30	65.5	141625	200000	65	26.0	59350	89025	
35	61.3	129650	183500	70	15.5	53250	79875	
40	56.5	107200	160800	73	0.0	42500	63750	

MODEL TC200-72-130 API LOAD CHART 130 FT. EXTENDED BASIC CRANE WEIGHT: 173,000 LBS.

REACH (FT.)	BOOM ANGLE (DEG.)	OFFBOARD LOAD (LBS.)	ONBOARD LOAD (LBS.)	REACH (FT.)	BOOM ANGLE (DEG.)	OFFBOARD LOAD (LBS.)	ONBOARD LOAD (LBS.)	API PEDESTAL REACTIONS (REACTIONS @ 3 X OFFBOARD RATED LOAD) (OTM = OVERTURNING MOMENT)
23	79.5	112650	168965	80	52.0	36400	54600	MAXIMUM OTM = 15,114,951 FT. LBS. CORRESPONDING AXIAL FORCE = 223,780 LBS. MAXIMUM AXIAL FORCE = 500,950 LBS. CORRESPONDING OTM = 9,197,294 FT. LBS.
25	78.9	107850	161772	85	49.2	33860	50790	
30	76.7	94100	141000	90	46.2	31560	47340	
35	74.4	89540	124307	95	43.0	29480	44220	
40	72.1	73840	110760	100	39.7	27580	41370	
45	69.7	66350	99525	105	36.1	25850	38775	
50	67.4	60100	90150	110	32.2	24275	36413	
55	65.0	54665	81998	115	27.8	22800	34200	
60	62.5	50115	75173	120	22.6	21475	32213	
65	60.0	45960	68940	125	15.9	20260	30390	
70	57.4	42390	63585	130	0.0	12350	18525	
75	54.8	39225	58838					

IN ACCORDANCE WITH API-2C, VALUES SHOWN ARE ACTUAL HOOK LOAD (WEIGHT OF BLOCK AND HOOK EXCLUDED).
 LOAD LINE BLOCK WEIGHT IS 3900 LBS.
 LOAD LINE (8 PART LINE): 1-1/4" 19X7 EIPS IWRC; 130,200 LB. BREAKING STRENGTH; 26,040 LB. WORKING STRENGTH.
 FAST LINE BLOCK WEIGHT IS 100 LBS.
 FAST LINE (1 PART LINE): 9/16" 19X7 EIPS IWRC; 25,000 LB. BREAKING STRENGTH; 5,000 LB. WORKING STRENGTH.
 ONBOARD LOAD = 1.5 X OFFBOARD LOAD.
 PEDESTAL REACTIONS ARE BASED ON THREE TIMES THE OFFBOARD LOAD PLUS DEAD LOAD

EBI CRANES

MODEL TC200-72-130 TELESCOPIC BOOM CRANES (INTERNATIONAL METRIC UNITS)

MODEL TC200-72-130 API LOAD CHART (22 METERS RETRACTED)

BASIC CRANE WEIGHT: 78,472 KGS.

REACH (METERS)	BOOM ANGLE (DEG.)	OFFBOARD LOAD (KGS.)	ONBOARD LOAD (KGS.)	REACH (METERS)	BOOM ANGLE (DEG.)	OFFBOARD LOAD (KGS.)	ONBOARD LOAD (KGS.)	API PEDESTAL REACTIONS (REACTIONS @ 3 X OFFBOARD RATED LOAD) (OTM = OVERTURNING MOMENT)
3.7	80.0	90719	90719	13.7	51.7	43137	64705	MAXIMUM OTM = 2201 TON METERS CORRESPONDING AXIAL FORCE = 250,361 KGS. MAXIMUM AXIAL FORCE = 346,091 KGS. CORRESPONDING OTM = 1288 TON METERS
4.6	78.5	90719	90719	15.2	46.5	35539	53309	
6.1	74.1	90719	90719	16.8	40.8	33702	50553	
7.6	69.2	75988	90719	18.3	34.2	30051	45076	
9.1	65.5	64240	90719	19.8	26.0	26921	40381	
10.7	61.3	58808	83234	21.3	15.5	24154	36231	
12.2	56.5	48625	72938	22.3	0.0	19278	28917	

MODEL TC200-72-130 API LOAD CHART (39.6 METERS EXTENDED)

BASIC CRANE WEIGHT: 78,472 KGS.

REACH (METERS)	BOOM ANGLE (DEG.)	OFFBOARD LOAD (KGS.)	ONBOARD LOAD (KGS.)	REACH (METERS)	BOOM ANGLE (DEG.)	OFFBOARD LOAD (KGS.)	ONBOARD LOAD (KGS.)	API PEDESTAL REACTIONS (REACTIONS @ 3 X OFFBOARD RATED LOAD) (OTM = OVERTURNING MOMENT)
7.0	79.5	51097	76641	24.5	52.0	16511	24766	MAXIMUM OTM = 2090 TON METERS CORRESPONDING AXIAL FORCE = 101,505 KGS. MAXIMUM AXIAL FORCE = 227,227 KGS. CORRESPONDING OTM = 1272 TON METERS
7.6	78.9	48920	73379	25.9	49.2	15359	23038	
9.1	76.7	42683	63957	27.4	46.2	14315	21473	
10.7	74.4	40615	56385	29.0	43.0	13372	20058	
12.2	72.1	33493	50240	30.5	39.7	12510	18765	
13.7	69.7	30096	45144	32.0	36.1	11725	17588	
15.2	67.4	27261	40891	33.5	32.2	11011	16516	
16.8	65.0	24796	37193	35.1	27.8	10342	15513	
18.3	62.5	22732	34098	36.6	22.6	9741	14611	
19.8	60.0	20847	31271	38.1	15.9	9190	13785	
21.3	57.4	19228	28842	39.6	0.0	5602	8403	
22.9	54.8	17792	26688					

IN ACCORDANCE WITH API-2C, VALUES SHOWN ARE ACTUAL HOOK LOAD (WEIGHT OF BLOCK AND HOOK EXCLUDED).

LOAD LINE BLOCK WEIGHT IS 1770 KGS.

LOAD LINE (8 PART LINE): 1-1/4" 19X7 EIPS IWRC; 59,074 KGS. BREAKING STRENGTH; 11,815 KGS. WORKING STRENGTH.

FAST LINE BLOCK WEIGHT IS 45.4 KGS.

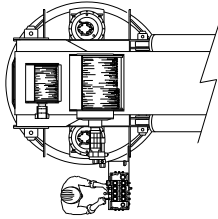
FAST LINE (1 PART LINE): 9/16" 19X7 EIPS IWRC; 11,340 KGS. BREAKING STRENGTH; 2,268 KGS. WORKING STRENGTH.

ONBOARD LOAD = 1.5 X OFFBOARD LOAD.

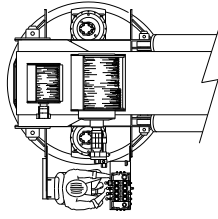
PEDESTAL REACTIONS ARE BASED ON THREE TIMES THE OFFBOARD LOAD PLUS DEAD LOAD

EBI CRANES

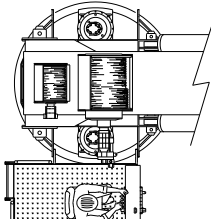
MODEL TC200-72-130 CRANES AVAILABLE CONFIGURATIONS



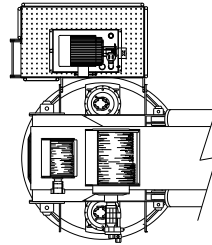
#1
WALK-AROUND
CONTROLS



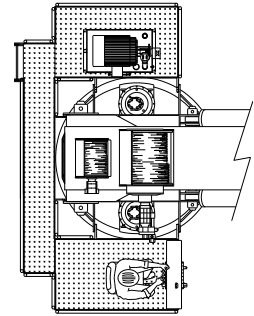
#2
OPERATOR'S SEAT
WITH CONTROLS



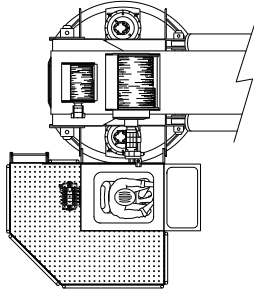
#3
OPEN-ONBOARD
CONTROLS WITH
PLATFORM



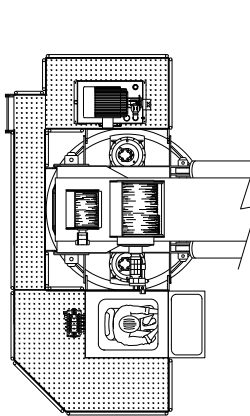
#4
ELECTRIC POWER
UNIT WITH PLATFORM



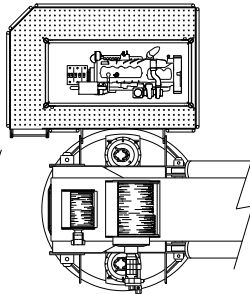
#5
OPEN-ONBOARD CONTROL
AND ELECTRIC POWER
UNIT WITH PLATFORMS



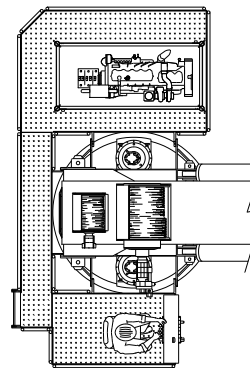
#6
OPERATOR'S CAB
WITH PLATFORM



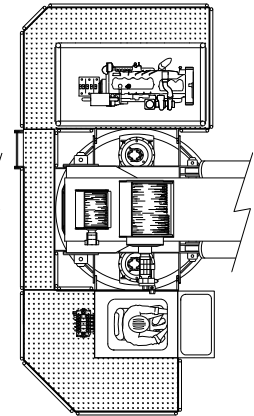
#7
OPERATOR'S CAB AND
ELECTRIC POWER UNIT
WITH PLATFORMS



#8
ENGINE DRIVEN
HYDRAULIC POWER
UNIT WITH PLATFORM



#9
OPEN-ONBOARD CONTROLS
AND ENGINE DRIVEN
HYDRAULIC POWER
UNIT WITH PLATFORMS



#10
OPERATOR'S CAB
AND ENGINE DRIVEN
HYDRAULIC POWER
UNIT WITH PLATFORMS

TAIL SWING CHART @ 0° BOOM ANGLE *

CONFIGURATION	MAXIMUM TAIL SWING	CONFIGURATION	MAXIMUM TAIL SWING	CONFIGURATION	MAXIMUM TAIL SWING	CONFIGURATION	MAXIMUM TAIL SWING
1	6'-4" Radius	4	8'-4" Radius	7	10'-2" Radius	10	10'-8" Radius
2	6'-4" Radius	5	8'-4" Radius	8	10'-8" Radius	*TAIL SWING VALUES MAY BE EXCEEDED DEPENDING UPON WINCH MOUNT OPTIONS	
3	8'-4" Radius	6	10'-2" Radius	9	10'-8" Radius		

ELEVATING BOATS LLC

Corporate/EBI Liftboats, LLC. - 124 Finish Line Lane - Houma, LA 70360

Phone: (985) 868-9655 Fax: (985) 868-9656

EBI Cranes, LLC. - 900 St. Bernard Pkwy. - Braithwaite, LA 70040

Phone: (504) 682-5245 Fax: (504) 682-5296

EBI Machining, LLC. - 40495 West I-55 Service Road - Ponchatoula, LA 70454

Phone: (985) 386-2053 Fax: (985) 386-2084

Email: postmaster@ebi-inc.com

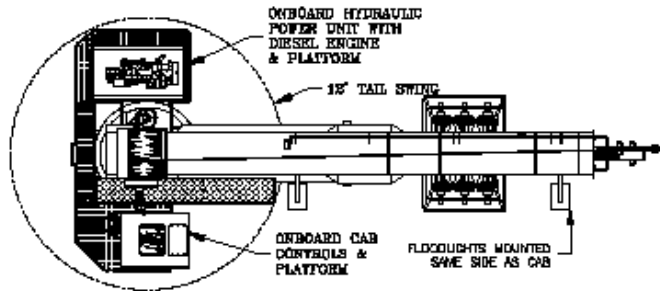


Website: www.ebi-inc.com

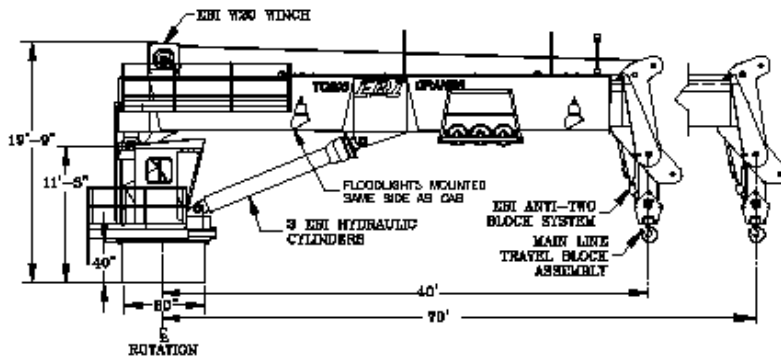


EBI CRANES

MODEL TC200-40-70 TELESCOPIC BOOM CRANES



EBI CRANE MODEL TC200-40-70	
TRACTED "A"	40'
EXTENDED "B"	70'



STANDARD EQUIPMENT:

EBI CRANES ARE LICENSED MONOGRAM CRANES UNDER API-2C SPECIFICATIONS.
EBI CRANES MEET OSHA REQUIREMENTS.
PLANETARY SWING MECHANISM WITH ADJUSTABLE MOUNT, HIGH TORQUE MOTOR AND AUTOMATIC SPRING APPLIED BRAKES.
DOUBLE HYDRAULIC SWIVEL FOR CONTINUOUS ROTATION.
INDUCTION HARDENED CHROME PLATED CYLINDER RODS.
18" I.D. MANWAY WITH BOLTED COVER.
THREE COLOR, SAFE LOAD INDICATOR GAUGE.
RACK AND PINION TELESCOPIC SYSTEM. THERE ARE NO INTERNAL BOOM CYLINDERS.
LOAD LINE WINCH: 2 SPEED MOTOR.
THREE COAT MARINE PAINT SYSTEM.
ANTI-FRICTION BEARINGS IN THE SHEAVES.
BRONZE BUSHINGS ON ALL PIVOTING POINTS.
LOAD TEST AT TWICE API OFFBOARD LOAD BEFORE SHIPPING.

EBI PRODUCTS AND SPECIFICATIONS ARE SUBJECT TO CHANGE WITHOUT NOTICE OR OBLIGATIONS.

OPTIONAL EQUIPMENT:

EBI CRANES TO MEET ABS AND USCG REQUIREMENTS.
CRANE CONTROL LOCATIONS - PEDESTAL MOUNTED WALKAROUND - REMOTELY LOCATED - VARIOUS PLATFORM CONFIGURATIONS - CAB MOUNTED JOY STICK TYPE
SOLAR/BATTERY POWERED BOOM BEACONS.
BOOM LIGHTING.
COMPLETE HYDRAULIC SAFETY SYSTEM DETECTING THE MOMENT INDUCED BY LOAD ON THE CRANE TO HELP PREVENT OVERLOAD CONDITION.
POWER UNITS CAN BE CRANE MOUNTED OR REMOTELY LOCATED.
POWER UNITS: ELECTRIC MOTOR, AIR MOTOR, OR DIESEL ENGINE (DETROIT DIESEL, CUMMINS, CATERPILLAR, DEUTZ AIR COOLED, ETC.).
DIESEL ENGINE STARTER SYSTEMS: ELECTRIC, AIR OR HYDRAULIC.
AIR/HYDRAULIC OIL HEAT EXCHANGER.
17-4 PH STAINLESS STEEL, HEAT TREATED, CHROME PLATED CYLINDER RODS.
17-4 HH1150 STAINLESS STEEL, HEAT TREATED PINS.
FAST LINE WINCH DESIGNED FOR PERSONNEL HANDLING. WINCH CAPACITY IS 5000 LB. LINE PULL. (1000 LB. FOR PERSONNEL)
ANTI-TWO BLOCK SYSTEM.
EMERGENCY LOAD LOWERING SYSTEM.

EBI Cranes, LLC.



900 St. Bernard Pkwy. Braithwaite, LA 70040
 Phone: (504) 682-5245 Fax (985) 386-2084
 Email: cranes@ebi-inc.com Website: www.ebi-inc.com

EBI CRANES

MODEL TC200-40-70 TELESCOPIC BOOM CRANES (U.S. CUSTOMARY UNITS)

MODEL TC200-40-70 API LOAD CHART 40 FT. RETRACTED								BASIC CRANE WEIGHT: 72,202 LBS.
REACH (FT.)	BOOM ANGLE (DEG.)	OFFBOARD LOAD (LBS.)	ONBOARD LOAD (LBS.)	REACH (FT.)	BOOM ANGLE (DEG.)	OFFBOARD LOAD (LBS.)	ONBOARD LOAD (LBS.)	API PEDESTAL REACTIONS (REACTIONS @ 3 X OFFBOARD RATED LOAD) (OTM = OVERTURNING MOMENT)
12	75.5	200,000	200,000	30	43.0	141,625	200,000	MAXIMUM OTM = 15,916,642 FT. LBS. CORRESPONDING AXIAL FORCE = 551,950 LBS. MAXIMUM AXIAL FORCE = 763,000 LBS. CORRESPONDING OTM = 9,314,045 FT. LBS.
15	68.5	200,000	200,000	35	31.0	135,225	200,000	
20	60.0	200,000	200,000	40	0.0	107,200	160,800	
25	52.5	167,525	200,000					

MODEL TC200-40-70 API LOAD CHART 0 FT. EXTENDED								BASIC CRANE WEIGHT: 72,202 LBS.
REACH (FT.)	BOOM ANGLE (DEG.)	OFFBOARD LOAD (LBS.)	ONBOARD LOAD (LBS.)	REACH (FT.)	BOOM ANGLE (DEG.)	OFFBOARD LOAD (LBS.)	ONBOARD LOAD (LBS.)	API PEDESTAL REACTIONS (REACTIONS @ 3 X OFFBOARD RATED LOAD) (OTM = OVERTURNING MOMENT)
15	78.0	114,600	171,900	50	44.5	60,100	90,150	MAXIMUM OTM = 15,916,642 FT. LBS. CORRESPONDING AXIAL FORCE = 551,950 LBS. MAXIMUM AXIAL FORCE = 763,000 LBS. CORRESPONDING OTM = 9,314,045 FT. LBS.
20	73.0	112,650	168,965	52.5	41.5	57,380	86,070	
25	69.0	107,850	161,772	55	38.5	54,665	81,998	
30	64.5	94,100	141,000	60	31.5	50,115	75,173	
35	60.0	89,540	124,307	65	22.5	45,960	68,940	
40	55.5	73,840	110,760	70	0.0	42,390	63,585	
45	50.0	66,350	99,525					

EBI CRANES

MODEL TC200-40-70 TELESCOPIC BOOM CRANES (INTERNATIONAL METRIC UNITS)

MODEL TC200-40-70 API LOAD CHART (12.9 METERS RETRACTED) BASIC CRANE WEIGHT: 32.75 METRIC TONS

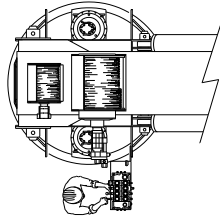
REACH (METERS)	BOOM ANGLE (DEG.)	OFFBOARD LOAD (MT)	ONBOARD LOAD (MT)	REACH (METERS)	BOOM ANGLE (DEG.)	OFFBOARD LOAD (MT.)	ONBOARD LOAD (MT)	API PEDESTAL REACTIONS (REACTIONS @ 3 X OFFBOARD RATED LOAD) (OTM = OVERTURNING MOMENT)
3.6	75.5	90.7	90.7	9.1	43.0	64.2	90.7	MAXIMUM OTM = 2201 TON METERS CORRESPONDING AXIAL FORCE = 250 TON METERS MAXIMUM AXIAL FORCE = 346 TON METERS CORRESPONDING OTM = 1288 TON METERS
4.5	68.5	90.7	90.7	10.6	31.0	61.3	90.7	
6.0	60.0	90.7	90.7	12.1	0.0	48.6	72.9	
7.6	52.5	75.9	90.7					

MODEL TC200-40-70 API LOAD CHART (21.3 METERS EXTENDED) BASIC CRANE WEIGHT: 32.75 METRIC TONS

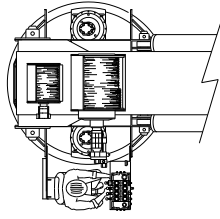
REACH (METERS)	BOOM ANGLE (DEG.)	OFFBOARD LOAD (MT)	ONBOARD LOAD (MT)	REACH (METERS)	BOOM ANGLE (DEG.)	OFFBOARD LOAD (MT)	ONBOARD LOAD (MT)	API PEDESTAL REACTIONS (REACTIONS @ 3 X OFFBOARD RATED LOAD) (OTM = OVERTURNING MOMENT)
4.5	78.0	52.0	78.0	15.2	44.5	27.2	40.8	MAXIMUM OTM = 2201 TON METERS CORRESPONDING AXIAL FORCE = 250 TON METERS MAXIMUM AXIAL FORCE = 346 TON METERS CORRESPONDING OTM = 1288 TON METERS
6.0	73.0	51.9	76.6	16.0	41.5	26.0	39.0	
7.6	69.0	48.9	73.3	16.7	38.5	24.7	37.1	
9.1	64.5	42.6	63.9	18.2	31.5	22.7	34.0	
10.6	60.0	40.6	56.3	19.8	22.5	20.8	31.2	
12.1	55.5	33.4	50.2	21.3	0.0	19.2	28.8	
13.7	50.0	30.0	45.1					

EBI CRANES

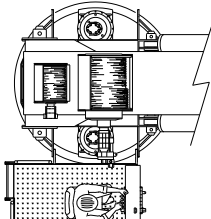
MODEL TC200-70-70 CRANES AVAILABLE CONFIGURATIONS



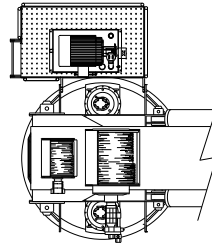
#1
WALK-AROUND
CONTROLS



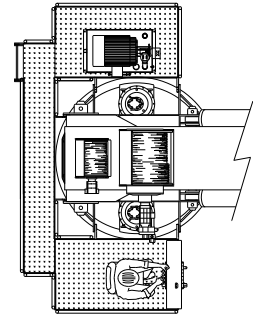
#2
OPERATOR'S SEAT
WITH CONTROLS



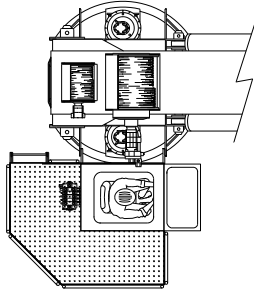
#3
OPEN-ONBOARD
CONTROLS WITH
PLATFORM



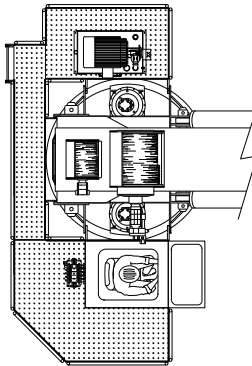
#4
ELECTRIC POWER
UNIT WITH PLATFORM



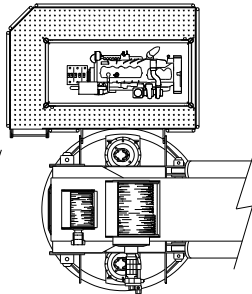
#5
OPEN-ONBOARD CONTROL
AND ELECTRIC POWER
UNIT WITH PLATFORMS



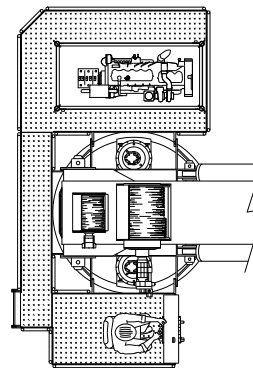
#6
OPERATOR'S CAB
WITH PLATFORM



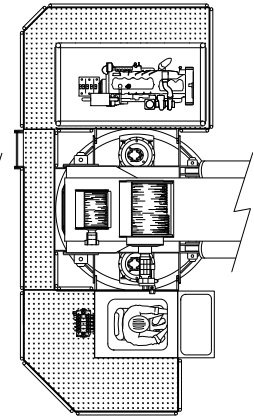
#7
OPERATOR'S CAB AND
ELECTRIC POWER UNIT
WITH PLATFORMS



#8
ENGINE DRIVEN
HYDRAULIC POWER
UNIT WITH PLATFORM



#9
OPEN-ONBOARD CONTROLS
AND ENGINE DRIVEN
HYDRAULIC POWER
UNIT WITH PLATFORMS



#10
OPERATOR'S CAB
AND ENGINE DRIVEN
HYDRAULIC POWER
UNIT WITH PLATFORMS

TAIL SWING CHART @ 0° BOOM ANGLE *

CONFIGURATION	MAXIMUM TAIL SWING	CONFIGURATION	MAXIMUM TAIL SWING	CONFIGURATION	MAXIMUM TAIL SWING	CONFIGURATION	MAXIMUM TAIL SWING
1	6'-4" Radius	4	8'-4" Radius	7	10'-2" Radius	10	10'-8" Radius
2	6'-4" Radius	5	8'-4" Radius	8	10'-8" Radius	*TAIL SWING VALUES MAY BE EXCEEDED DEPENDING UPON WINCH MOUNT OPTIONS	
3	8'-4" Radius	6	10'-2" Radius	9	10'-8" Radius		

ELEVATING BOATS LLC

Corporate/EBI Liftboats, LLC. - 124 Finish Line Lane - Houma, LA 70360

Phone: (985) 868-9655 Fax: (985) 868-9656

EBI Cranes, LLC. - 900 St. Bernard Pkwy. - Braithwaite, LA 70040

Phone: (504) 682-5245 Fax: (504) 682-5296

EBI Machining, LLC. - 40495 West I-55 Service Road - Ponchatoula, LA 70454

Phone: (985) 386-2053 Fax: (985) 386-2084

Email: postmaster@ebi-inc.com



Website: www.ebi-inc.com

