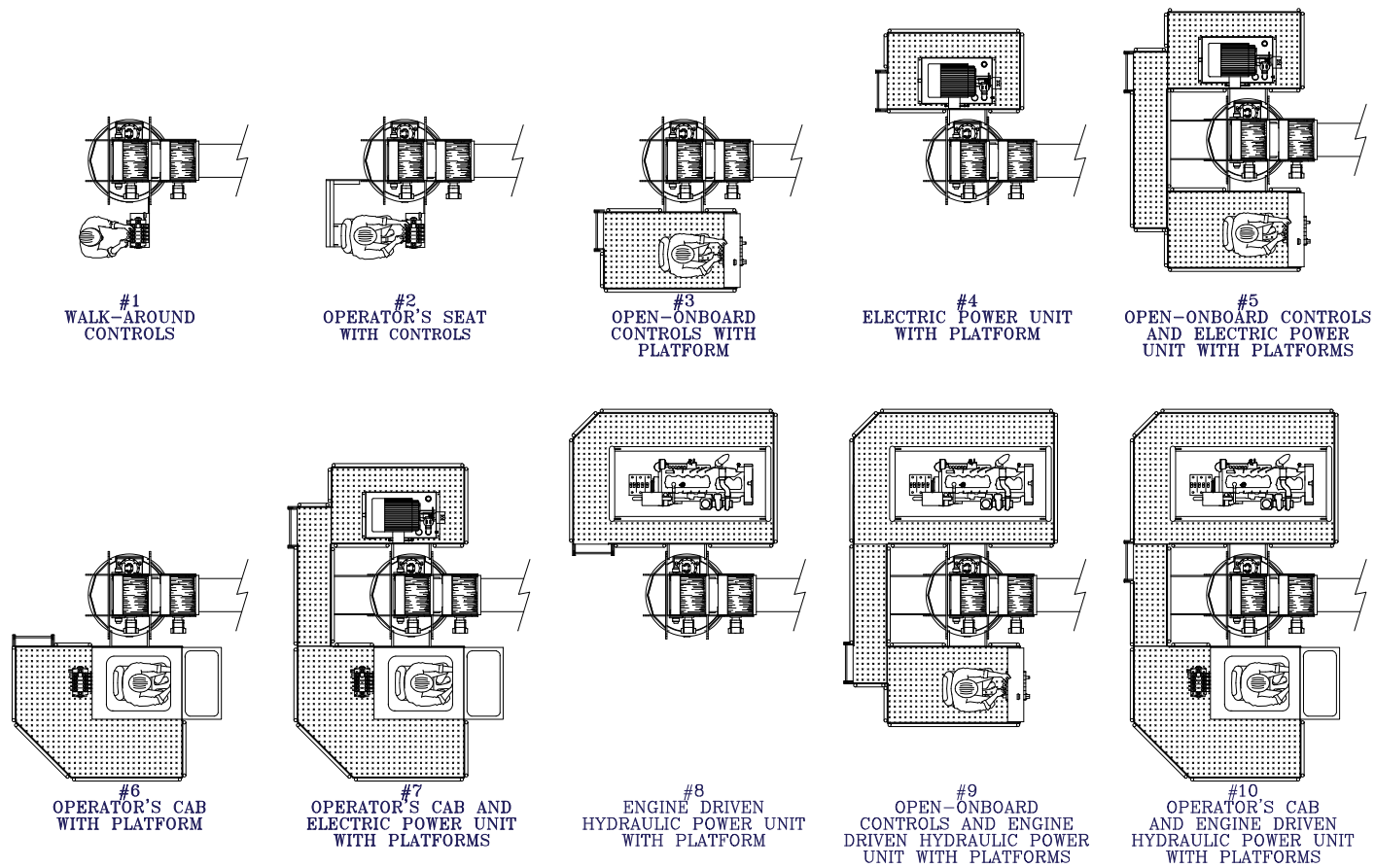


# EBI CRANES

## MODEL C20 FIXED BOOM CRANES AVAILABLE CONFIGURATIONS



### TAIL SWING CHART @ 0° BOOM ANGLE \*

CONFIGURATION	MAXIMUM TAIL SWING	CONFIGURATION	MAXIMUM TAIL SWING	CONFIGURATION	MAXIMUM TAIL SWING	CONFIGURATION	MAXIMUM TAIL SWING
1	3'-11" Radius	4	6'-9" Radius	7	8'-7" Radius	10	9'-1" Radius
2	5'-2" Radius	5	6'-9" Radius	8	9'-1" Radius	*TAIL SWING VALUES MAY BE EXCEEDED DEPENDING UPON WINCH MOUNT OPTIONS	
3	6'-9" Radius	6	8'-7" Radius	9	9'-1" Radius		



### ELEVATING BOATS LLC

Corporate/EBI Liftboats, LLC. - 201 Dean Court - Houma, LA 70363  
 Phone: (985) 868-9655 Fax: (985) 868-9656

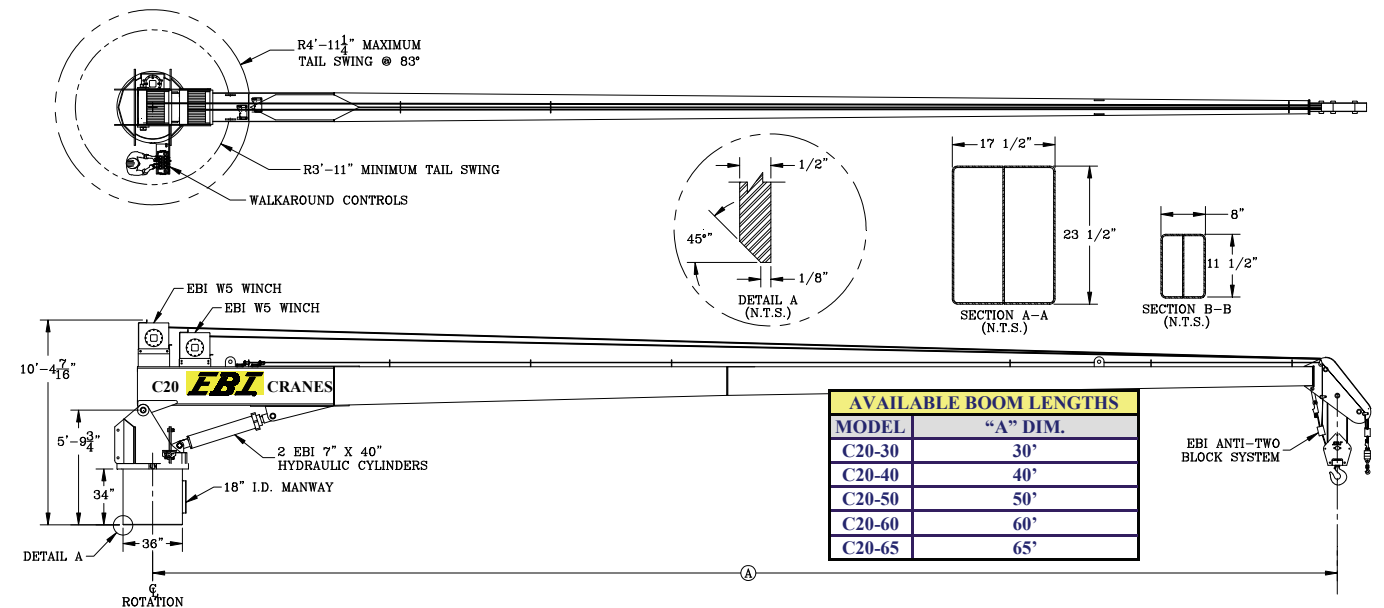
EBI Cranes, LLC. - 900 St. Bernard Pkwy. - Braithwaite, LA 70040  
 Phone: (504) 682-5245 Fax: (504) 682-5296

EBI Machining, LLC. - 40495 West I-55 Service Road - Ponchatoula, LA 70454  
 Phone: (985) 386-2053 Fax: (985) 386-2084

Email: postmaster@ebi-inc.com Website: www.ebi-inc.com

# EBI CRANES

## MODEL C20 FIXED BOOM CRANES



### STANDARD EQUIPMENT:

EBI CRANES ARE LICENSED MONOGRAM CRANES UNDER API-2C SPECIFICATIONS.  
 EBI CRANES MEET OSHA REQUIREMENTS.  
 PLANETARY SWING MECHANISM WITH ADJUSTABLE MOUNT, HIGH TORQUE MOTOR AND AUTOMATIC SPRING APPLIED BRAKES.  
 DOUBLE HYDRAULIC SWIVEL FOR CONTINUOUS ROTATION.  
 INDUCTION HARDENED CHROME PLATED CYLINDER RODS.  
 18" I.D. MANWAY WITH BOLTED COVER.  
 THREE COLOR, SAFE LOAD INDICATOR GAUGE.  
 LOAD LINE WINCH IS DESIGNED FOR PERSONNEL HANDLING. WINCH CAPACITY IS 5000 LB. LINE PULL REEVED UP TO TWO PART LINE WITH FORGED HOOK AND SAFETY LATCH.  
 THREE COAT MARINE PAINT SYSTEM.  
 ANTI-FRICTION BEARINGS IN THE SHEAVES.  
 BRONZE BUSHINGS ON ALL PIVOTING POINTS.  
 LOAD TEST AT TWICE API OFFBOARD LOAD BEFORE SHIPPING.

### OPTIONAL EQUIPMENT:

EBI CRANES TO MEET ABS AND USCG REQUIREMENTS.  
 CRANE CONTROL LOCATIONS  
 - PEDESTAL MOUNTED WALKAROUND  
 - REMOTELY LOCATED  
 - VARIOUS PLATFORM CONFIGURATIONS  
 - CAB MOUNTED JOY STICK TYPE  
 SOLAR/BATTERY POWERED BOOM BEACONS.  
 BOOM LIGHTING.  
 COMPLETE HYDRAULIC SAFETY SYSTEM DETECTING THE MOMENT INDUCED BY LOAD ON THE CRANE TO HELP PREVENT OVERLOAD CONDITION.  
 POWER UNITS CAN BE CRANE MOUNTED OR REMOTELY LOCATED.  
 POWER UNITS: ELECTRIC MOTOR, AIR MOTOR, OR DIESEL ENGINE (DETROIT DIESEL, CUMMINS, CATERPILLAR, DEUTZ AIR COOLED, ETC.).  
 DIESEL ENGINE STARTER SYSTEMS: ELECTRIC, AIR OR HYDRAULIC.  
 AIR/HYDRAULIC OIL HEAT EXCHANGER.  
 17-4 PH STAINLESS STEEL, HEAT TREATED, CHROME PLATED CYLINDER RODS.  
 440C STAINLESS STEEL, HEAT TREATED PINS.  
 FAST LINE WINCH DESIGNED FOR PERSONNEL HANDLING. WINCH CAPACITY IS 5000 LB. LINE PULL. (1000 LB. FOR PERSONNEL)  
 ANTI-TWO BLOCK SYSTEM.  
 EMERGENCY LOAD LOWERING SYSTEM.

## EBI Cranes, LLC.



900 St. Bernard Pkwy. Braithwaite, LA 70040  
 Phone: (504) 682-5245 Fax (985) 386-2084  
 Email: cranes@ebi-inc.com Website: www.ebi-inc.com  
 1-800-843-2895

# EBI CRANES

## MODEL C20 FIXED BOOM CRANES (U.S. CUSTOMARY UNITS)

MODEL C20-30 API LOAD CHART								BASIC CRANE WEIGHT: 8,625 LBS.	
REACH (FT.)	BOOM ANGLE (DEG.)	OFFBOARD LOAD (LBS.)	ONBOARD LOAD (LBS.)	REACH (FT.)	BOOM ANGLE (DEG.)	OFFBOARD LOAD (LBS.)	ONBOARD LOAD (LBS.)	API PEDESTAL REACTIONS (REACTIONS @ 3 X OFFBOARD RATED LOAD) (OTM = OVERTURNING MOMENT)	
10	68	19450	19450	25	32	9200	14075	MAXIMUM OTM = 819,812 FT. LBS. CORRESPONDING AXIAL FORCE = 61,236 LBS.	
15	58	16975	19450	30	0	7000	10775	MAXIMUM AXIAL FORCE = 68,625 LBS. CORRESPONDING OTM = 634,327 FT. LBS.	
20	46	11975	18238						

MODEL C20-40 API LOAD CHART								BASIC CRANE WEIGHT: 9,554 LBS.	
REACH (FT.)	BOOM ANGLE (DEG.)	OFFBOARD LOAD (LBS.)	ONBOARD LOAD (LBS.)	REACH (FT.)	BOOM ANGLE (DEG.)	OFFBOARD LOAD (LBS.)	ONBOARD LOAD (LBS.)	API PEDESTAL REACTIONS (REACTIONS @ 3 X OFFBOARD RATED LOAD) (OTM = OVERTURNING MOMENT)	
10	74	19450	19450	30	40	6875	10588	MAXIMUM OTM = 819,517 FT. LBS. CORRESPONDING AXIAL FORCE = 60,971 LBS.	
15	66	16575	19450	35	28	5450	8450	MAXIMUM AXIAL FORCE = 69,554 LBS. CORRESPONDING OTM = 618,570 FT. LBS.	
20	58	11725	17863	40	0	4275	6688		
25	50	9025	13813						

MODEL C20-50 API LOAD CHART								BASIC CRANE WEIGHT: 10,545 LBS.	
REACH (FT.)	BOOM ANGLE (DEG.)	OFFBOARD LOAD (LBS.)	ONBOARD LOAD (LBS.)	REACH (FT.)	BOOM ANGLE (DEG.)	OFFBOARD LOAD (LBS.)	ONBOARD LOAD (LBS.)	API PEDESTAL REACTIONS (REACTIONS @ 3 X OFFBOARD RATED LOAD) (OTM = OVERTURNING MOMENT)	
10	77	17075	19450	35	44	5075	7888	MAXIMUM OTM = 774,299 FT. LBS. CORRESPONDING AXIAL FORCE = 46,475 LBS.	
15	71	12950	19450	40	36	4075	6388	MAXIMUM AXIAL FORCE = 63,420 LBS. CORRESPONDING OTM = 559,716 FT. LBS.	
20	65	11425	17413	45	25	3225	5113		
25	59	8675	13288	50	0	2475	3988		
30	52	6575	10138						

MODEL C20-60 API LOAD CHART								BASIC CRANE WEIGHT: 11,271 LBS.	
REACH (FT.)	BOOM ANGLE (DEG.)	OFFBOARD LOAD (LBS.)	ONBOARD LOAD (LBS.)	REACH (FT.)	BOOM ANGLE (DEG.)	OFFBOARD LOAD (LBS.)	ONBOARD LOAD (LBS.)	API PEDESTAL REACTIONS (REACTIONS @ 3 X OFFBOARD RATED LOAD) (OTM = OVERTURNING MOMENT)	
10	80	14475	19450	40	48	3975	6238	MAXIMUM OTM = 711,830 FT. LBS. CORRESPONDING AXIAL FORCE = 32,301 LBS.	
15	75	11200	17075	45	41	3100	4925	MAXIMUM AXIAL FORCE = 56,346 LBS. CORRESPONDING OTM = 477,750 FT. LBS.	
20	70	9075	13888	50	33	2350	3800		
25	65	7600	11675	55	23	1800	2975		
30	59	6450	9950	60	0	1275	2188		
35	54	5125	7963						

MODEL C20-65 API LOAD CHART								BASIC CRANE WEIGHT: 12,000 LBS.	
REACH (FT.)	BOOM ANGLE (DEG.)	OFFBOARD LOAD (LBS.)	ONBOARD LOAD (LBS.)	REACH (FT.)	BOOM ANGLE (DEG.)	OFFBOARD LOAD (LBS.)	ONBOARD LOAD (LBS.)	API PEDESTAL REACTIONS (REACTIONS @ 3 X OFFBOARD RATED LOAD) (OTM = OVERTURNING MOMENT)	
10	83	14295	19450	40	55	3795	5968	MAXIMUM OTM = 711,830 FT. LBS. CORRESPONDING AXIAL FORCE = 32,301 LBS.	
15	80	11020	16805	45	48	2920	4655	MAXIMUM AXIAL FORCE = 56,346 LBS. CORRESPONDING OTM = 477,750 FT. LBS.	
20	76	8895	13618	50	39	2170	3530		
25	72	7420	11405	55	30	1620	2705		
30	67	6270	9680	60	20	1095	1918		
35	61	4945	7693	65	0	970	1730		

IN ACCORDANCE WITH API-2C, VALUES SHOWN ARE ACTUAL HOOK LOAD (WEIGHT OF BLOCK AND HOOK EXCLUDED).  
LOAD LINE BLOCK WEIGHT IS 450 LBS.  
LOAD LINE (4 PART LINE): 9/16" 19X7 EIPS IWRC; 25,000 LB. BREAKING STRENGTH; 5,000 LB. WORKING STRENGTH.  
FAST LINE BLOCK WEIGHT IS 100 LBS.  
FAST LINE (1 PART LINE): 9/16" 19X7 EIPS IWRC; 25,000 LB. BREAKING STRENGTH; 5,000 LB. WORKING STRENGTH.  
ONBOARD LOAD = 1.5 X OFFBOARD LOAD.  
PEDESTAL REACTIONS ARE BASED ON THREE TIMES THE OFFBOARD LOAD PLUS DEAD LOAD

# EBI CRANES

## MODEL C20 FIXED BOOM CRANES (INTERNATIONAL METRIC UNITS)

MODEL C20-30 API LOAD CHART								BASIC CRANE WEIGHT: 3,920 KGS.	
REACH (METERS)	BOOM ANGLE (DEG.)	OFFBOARD LOAD (KGS.)	ONBOARD LOAD (KGS.)	REACH (METERS)	BOOM ANGLE (DEG.)	OFFBOARD LOAD (KGS.)	ONBOARD LOAD (KGS.)	API PEDESTAL REACTIONS (REACTIONS @ 3 X OFFBOARD RATED LOAD) (OTM = OVERTURNING MOMENT)	
3.0	68	8822	8822	7.6	32	4173	6384	MAXIMUM OTM = 124 TON METERS CORRESPONDING AXIAL FORCE = 27,834 KGS.	
4.6	58	7700	8822	9.1	0	3175	4888	MAXIMUM AXIAL FORCE = 31,193 KGS. CORRESPONDING OTM = 96 TON METERS	
6.1	46	5432	8272						

MODEL C20-40 API LOAD CHART								BASIC CRANE WEIGHT: 4,342 KGS.	
REACH (METERS)	BOOM ANGLE (DEG.)	OFFBOARD LOAD (KGS.)	ONBOARD LOAD (KGS.)	REACH (METERS)	BOOM ANGLE (DEG.)	OFFBOARD LOAD (KGS.)	ONBOARD LOAD (KGS.)	API PEDESTAL REACTIONS (REACTIONS @ 3 X OFFBOARD RATED LOAD) (OTM = OVERTURNING MOMENT)	
3.0	74	8822	8822	9.1	40	3118	4802	MAXIMUM OTM = 124 TON METERS CORRESPONDING AXIAL FORCE = 27,714 KGS.	
4.6	66	7518	8822	10.7	28	2472	3833	MAXIMUM AXIAL FORCE = 31,615 KGS. CORRESPONDING OTM = 93 TON METERS	
6.1	58	5318	8102	12.2	0	1939	3033		
7.6	50	4094	6265						

MODEL C20-50 API LOAD CHART								BASIC CRANE WEIGHT: 4,793 KGS.	
REACH (METERS)	BOOM ANGLE (DEG.)	OFFBOARD LOAD (KGS.)	ONBOARD LOAD (KGS.)	REACH (METERS)	BOOM ANGLE (DEG.)	OFFBOARD LOAD (KGS.)	ONBOARD LOAD (KGS.)	API PEDESTAL REACTIONS (REACTIONS @ 3 X OFFBOARD RATED LOAD) (OTM = OVERTURNING MOMENT)	
3.0	77	7745	8822	10.7	44	2302	3578	MAXIMUM OTM = 117 TON METERS CORRESPONDING AXIAL FORCE = 21,125 KGS.	
4.6	71	5874	8822	12.2	36	1848	2898	MAXIMUM AXIAL FORCE = 28,827 KGS. CORRESPONDING OTM = 85 TON METERS	
6.1	65	5182	7898	13.7	25	1463	2319		
7.6	59	3935	6027	15.2	0	1123	1809		
9.1	52	2982	4598						

MODEL C20-60 API LOAD CHART								BASIC CRANE WEIGHT: 5,123 KGS.	
REACH (METERS)	BOOM ANGLE (DEG.)	OFFBOARD LOAD (KGS.)	ONBOARD LOAD (KGS.)	REACH (METERS)	BOOM ANGLE (DEG.)	OFFBOARD LOAD (KGS.)	ONBOARD LOAD (KGS.)	API PEDESTAL REACTIONS (REACTIONS @ 3 X OFFBOARD RATED LOAD) (OTM = OVERTURNING MOMENT)	
3.0	80	6566	8822	12.2	48	1803	2830	MAXIMUM OTM = 108 TON METERS CORRESPONDING AXIAL FORCE = 14,682 KGS.	
4.6	75	5080	7745	13.7	41	1406	2234	MAXIMUM AXIAL FORCE = 25,611 KGS. CORRESPONDING OTM = 66 TON METERS	
6.1	70	4116	6299	15.2	33	1066	1724		
7.6	65	3447	5296	16.8	23	816	1349		
9.1	59	2926	4513	18.3	0	578	992		
10.7	54	2325	3612						

MODEL C20-65 API LOAD CHART								BASIC CRANE WEIGHT: 5,443 KGS.	
REACH (METERS)	BOOM ANGLE (DEG.)	OFFBOARD LOAD (KGS.)	ONBOARD LOAD (KGS.)	REACH (METERS)	BOOM ANGLE (DEG.)	OFFBOARD LOAD (KGS.)	ONBOARD LOAD (KGS.)	API PEDESTAL REACTIONS (REACTIONS @ 3 X OFFBOARD RATED LOAD) (OTM = OVERTURNING MOMENT)	
3.0	83	6484	8822	12.2	55	1721	2707	MAXIMUM OTM = 108 TON METERS CORRESPONDING AXIAL FORCE = 14,682 KGS.	
4.6	80	4999	7623	13.7	48	1325	2112	MAXIMUM AXIAL FORCE = 25,611 KGS. CORRESPONDING OTM = 66 TON METERS	
6.1	76	4035	6177	15.2	39	984	1601		
7.6	72	3366	5173	16.8	30	735	1227		
9.1	67	2844	4391	18.3	20	497	870		
10.7	61	2243	3490	19.8	0	440	785		

IN ACCORDANCE WITH API-2C, VALUES SHOWN ARE ACTUAL HOOK LOAD (WEIGHT OF BLOCK AND HOOK EXCLUDED).  
LOAD LINE BLOCK WEIGHT IS 204 KGS.  
LOAD LINE (4 PART LINE): 9/16" 19X7 EIPS IWRC; 11,363 KGS. BREAKING STRENGTH; 2,272 KGS. WORKING STRENGTH.  
FAST LINE BLOCK WEIGHT IS 45.4 KGS.  
FAST LINE (1 PART LINE): 9/16" 19X7 EIPS IWRC; 11,363 KGS. BREAKING STRENGTH; 2,272 KGS. WORKING STRENGTH.  
ONBOARD LOAD = 1.5 X OFFBOARD LOAD.  
PEDESTAL REACTIONS ARE BASED ON THREE TIMES THE OFFBOARD LOAD PLUS DEAD LOAD