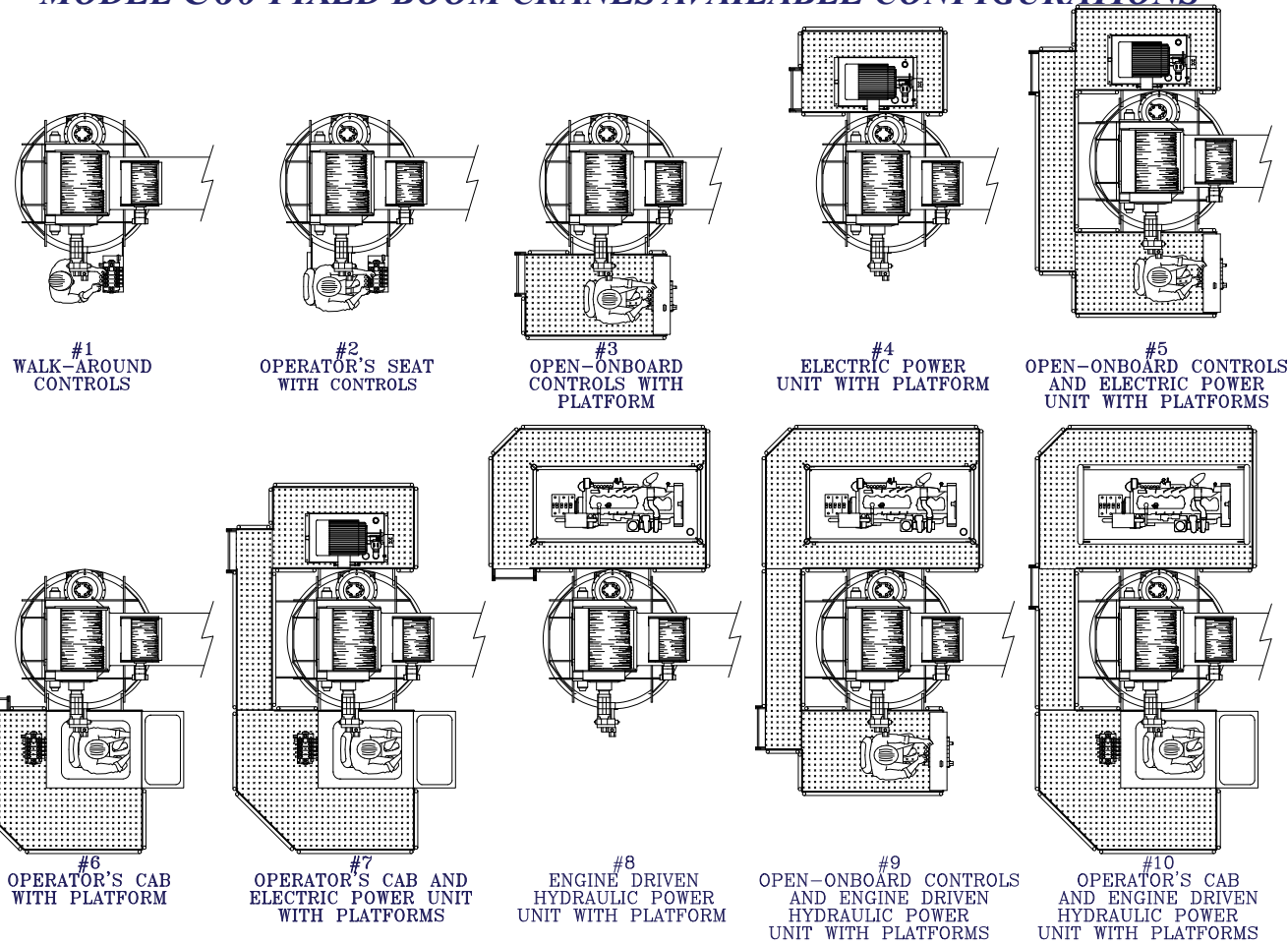


EBI CRANES

MODEL C60 FIXED BOOM CRANES AVAILABLE CONFIGURATIONS



TAIL SWING CHART @ 0° BOOM ANGLE *

CONFIGURATION	MAXIMUM TAIL SWING	CONFIGURATION	MAXIMUM TAIL SWING	CONFIGURATION	MAXIMUM TAIL SWING	CONFIGURATION	MAXIMUM TAIL SWING
1	4'-10" Radius	4	7'-4" Radius	7	9'-3" Radius	10	9'-8" Radius
2	5'-4" Radius	5	7'-4" Radius	8	9'-8" Radius	*TAIL SWING VALUES MAY BE EXCEEDED DEPENDING UPON WINCH MOUNT OPTIONS	
3	7'-4" Radius	6	9'-3" Radius	9	9'-8" Radius		



TC60 CRANE W5 & W20 WINCHES



EBI LOAD BLOCK & WEIGHT



REMOTE CONTROLS

ELEVATING BOATS LLC

Corporate/EBI Liftboats, LLC. - 201 Dean Court - Houma, LA 70363

Phone: (985) 868-9655 Fax: (985) 868-9656

EBI Cranes, LLC. - 900 St. Bernard Pkwy. - Braithwaite, LA 70040

Phone: (504) 682-5245 Fax: (504) 682-5296

EBI Machining, LLC. - 40495 West I-55 Service Road - Ponchatoula, LA 70454

Phone: (985) 386-2053 Fax: (985) 386-2084

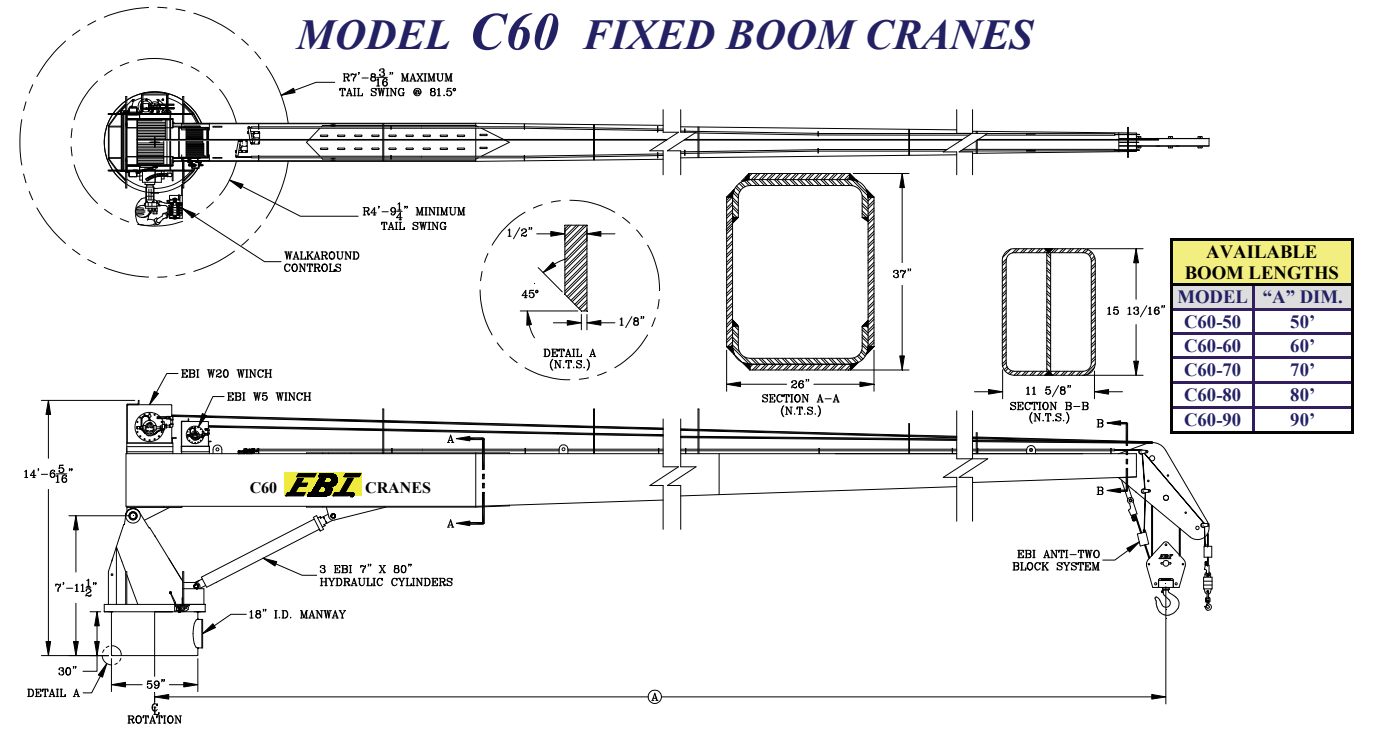
Email: postmaster@ebi-inc.com

Website: www.ebi-inc.com

06REV101811

EBI CRANES

MODEL C60 FIXED BOOM CRANES



STANDARD EQUIPMENT:

EBI CRANES ARE LICENSED MONOGRAM CRANES UNDER API-2C SPECIFICATIONS.

EBI CRANES MEET OSHA REQUIREMENTS.

PLANETARY SWING MECHANISM WITH ADJUSTABLE MOUNT, HIGH TORQUE MOTOR AND AUTOMATIC SPRING APPLIED BRAKES.

DOUBLE HYDRAULIC SWIVEL FOR CONTINUOUS ROTATION.

INDUCTION HARDENED CHROME PLATED CYLINDER RODS.

18" I.D. MANWAY WITH BOLTED COVER.

THREE COLOR, SAFE LOAD INDICATOR GAUGE.

LOAD LINE WINCH: 2 SPEED MOTOR.

THREE COAT MARINE PAINT SYSTEM.

ANTI-FRICTION BEARINGS IN THE SHEAVES.

BRONZE BUSHINGS ON ALL PIVOTING POINTS.

LOAD TEST AT TWICE API OFFBOARD LOAD BEFORE SHIPPING.

EBI PRODUCTS AND SPECIFICATIONS ARE SUBJECT TO CHANGE WITHOUT NOTICE OR OBLIGATIONS.

OPTIONAL EQUIPMENT:

EBI CRANES TO MEET ABS AND USCG REQUIREMENTS.

CRANE CONTROL LOCATIONS

- PEDESTAL MOUNTED WALKAROUND
- REMOTELY LOCATED - CAB MOUNTED JOY STICK TYPE
- VARIOUS PLATFORM CONFIGURATIONS

SOLAR/BATTERY POWERED BOOM BEACONS.

BOOM LIGHTING.

COMPLETE HYDRAULIC SAFETY SYSTEM DETECTING THE MOMENT INDUCED BY LOAD ON THE CRANE TO HELP PREVENT OVERLOAD CONDITION.

POWER UNITS CAN BE CRANE MOUNTED OR REMOTELY LOCATED.

POWER UNITS: ELECTRIC MOTOR, AIR MOTOR, OR DIESEL ENGINE (DETROIT DIESEL, CUMMINS, CATERPILLAR, DEUTZ AIR COOLED, ETC.).

DIESEL ENGINE STARTER SYSTEMS: ELECTRIC, AIR OR HYDRAULIC.

AIR/HYDRAULIC OIL HEAT EXCHANGER.

17-4 PH STAINLESS STEEL, HEAT TREATED, CHROME PLATED CYLINDER RODS.

440C STAINLESS STEEL, HEAT TREATED PINS.

FAST LINE WINCH DESIGNED FOR PERSONNEL HANDLING. WINCH CAPACITY IS 5000 LB. LINE PULL. (1000 LB. FOR PERSONNEL)

ANTI-TWO BLOCK SYSTEM.

EMERGENCY LOAD LOWERING SYSTEM.

EBI Cranes, LLC.



900 St. Bernard Pkwy. Braithwaite, LA 70040
 Phone: (504) 682-5245 Fax (985) 386-2084
 Email: cranes@ebi-inc.com Website: www.ebi-inc.com
 1-800-843-2895

08REV101811

EBI CRANES

MODEL C60 FIXED BOOM CRANES (U.S. CUSTOMARY UNITS)

MODEL C60-50 API LOAD CHART												BASIC CRANE WEIGHT: 26,163 LBS.	
REACH (FT.)	BOOM ANGLE (DEG.)	OFFBOARD LOAD (LBS.)	ONBOARD LOAD (LBS.)	REACH (FT.)	BOOM ANGLE (DEG.)	OFFBOARD LOAD (LBS.)	ONBOARD LOAD (LBS.)	REACH (FT.)	BOOM ANGLE (DEG.)	OFFBOARD LOAD (LBS.)	ONBOARD LOAD (LBS.)	API PEDESTAL REACTIONS (REACTIONS @ 3 X OFFBOARD RATED LOAD) (OTM = OVERTURNING MOMENT)	
10	76.0	51250	77575	25	58.0	26750	40825	40	35.0	15550	24025	MAXIMUM OTM = 2,287,600 FT. LBS. CORRESPONDING AXIAL FORCE = 66,060 LBS. MAXIMUM AXIAL FORCE = 184,100 LBS. CORRESPONDING OTM = 1,736,900 FT. LBS.	
15	70.0	38300	58150	30	51.0	21600	33100	45	23.5	13500	20950		
20	64.0	31350	47725	35	43.5	18200	28000	50	0.0	11900	18550		
MODEL C60-60 API LOAD CHART												BASIC CRANE WEIGHT: 27,730 LBS.	
REACH (FT.)	BOOM ANGLE (DEG.)	OFFBOARD LOAD (LBS.)	ONBOARD LOAD (LBS.)	REACH (FT.)	BOOM ANGLE (DEG.)	OFFBOARD LOAD (LBS.)	ONBOARD LOAD (LBS.)	REACH (FT.)	BOOM ANGLE (DEG.)	OFFBOARD LOAD (LBS.)	ONBOARD LOAD (LBS.)	API PEDESTAL REACTIONS (REACTIONS @ 3 X OFFBOARD RATED LOAD) (OTM = OVERTURNING MOMENT)	
10	78.5	49600	75100	30	58.0	21600	33100	50	31.5	11850	18475	MAXIMUM OTM = 2,325,100 FT. LBS. CORRESPONDING AXIAL FORCE = 60,280 LBS. MAXIMUM AXIAL FORCE = 180,720 LBS. CORRESPONDING OTM = 1,654,100 FT. LBS.	
15	73.5	36500	55450	35	53.0	18250	28075	55	22.0	10550	16525		
20	68.5	29400	44800	40	47.0	15600	24110	60	0.0	9450	14876		
25	63.5	25000	38200	45	40.0	13500	20950						
MODEL C60-70 API LOAD CHART												BASIC CRANE WEIGHT: 29,292 LBS.	
REACH (FT.)	BOOM ANGLE (DEG.)	OFFBOARD LOAD (LBS.)	ONBOARD LOAD (LBS.)	REACH (FT.)	BOOM ANGLE (DEG.)	OFFBOARD LOAD (LBS.)	ONBOARD LOAD (LBS.)	REACH (FT.)	BOOM ANGLE (DEG.)	OFFBOARD LOAD (LBS.)	ONBOARD LOAD (LBS.)	API PEDESTAL REACTIONS (REACTIONS @ 3 X OFFBOARD RATED LOAD) (OTM = OVERTURNING MOMENT)	
10	80.0	41350	62725	35	58.5	18050	27770	60	30.0	9400	14800	MAXIMUM OTM = 2,367,400 FT. LBS. CORRESPONDING AXIAL FORCE = 56,440 LBS. MAXIMUM AXIAL FORCE = 157,530 LBS. CORRESPONDING OTM = 1,402,900 FT. LBS.	
15	76.0	34850	52975	40	54.0	15550	24025	65	20.0	8450	13375		
20	72.0	28350	43225	45	48.5	13450	20875	70	0.0	7650	12175		
25	67.5	23500	35950	50	43.0	11850	18475						
30	63.0	20300	31150	55	37.0	10500	16450						
MODEL C60-80 API LOAD CHART												BASIC CRANE WEIGHT: 30,846 LBS.	
REACH (FT.)	BOOM ANGLE (DEG.)	OFFBOARD LOAD (LBS.)	ONBOARD LOAD (LBS.)	REACH (FT.)	BOOM ANGLE (DEG.)	OFFBOARD LOAD (LBS.)	ONBOARD LOAD (LBS.)	REACH (FT.)	BOOM ANGLE (DEG.)	OFFBOARD LOAD (LBS.)	ONBOARD LOAD (LBS.)	API PEDESTAL REACTIONS (REACTIONS @ 3 X OFFBOARD RATED LOAD) (OTM = OVERTURNING MOMENT)	
10	81.5	35100	53350	35	62.5	16700	25750	60	40.0	9350	14725	MAXIMUM OTM = 2,436,200 FT. LBS. CORRESPONDING AXIAL FORCE = 52,170 LBS. MAXIMUM AXIAL FORCE = 138,420 LBS. CORRESPONDING OTM = 1,160,600 FT. LBS.	
15	77.5	29300	44650	40	58.5	14700	22750	65	34.0	8400	13300		
20	74.0	25000	38200	45	54.0	12950	20125	70	27.0	7600	12100		
25	70.0	21850	33475	50	50.0	11750	18325	75	18.0	6900	11050		
30	66.5	19050	29275	55	45.0	10400	16300	80	0.0	6350	10225		
MODEL C60-90 API LOAD CHART												BASIC CRANE WEIGHT: 32,500 LBS.	
REACH (FT.)	BOOM ANGLE (DEG.)	OFFBOARD LOAD (LBS.)	ONBOARD LOAD (LBS.)	REACH (FT.)	BOOM ANGLE (DEG.)	OFFBOARD LOAD (LBS.)	ONBOARD LOAD (LBS.)	REACH (FT.)	BOOM ANGLE (DEG.)	OFFBOARD LOAD (LBS.)	ONBOARD LOAD (LBS.)	API PEDESTAL REACTIONS (REACTIONS @ 3 X OFFBOARD RATED LOAD) (OTM = OVERTURNING MOMENT)	
10	83.5	36100	54850	40	63.5	13850	21475	70	40.0	7225	11540	MAXIMUM OTM = 2,520,604 FT. LBS. CORRESPONDING AXIAL FORCE = 49,992 LBS. MAXIMUM AXIAL FORCE = 142,991 LBS. CORRESPONDING OTM = 1,084,271 FT. LBS.	
15	80.5	29850	45475	45	60.0	12225	19040	75	33.5	6475	10400		
20	77.0	24100	36850	50	56.0	10725	16790	80	27.0	5850	9475		
25	74.0	20350	31225	55	52.0	9600	15100	85	19.0	5350	8725		
30	70.5	17100	26350	60	48.0	8600	13600	90	0.0	5100	8350		
35	67.0	15975	24660	65	44.0	7850	12475						

IN ACCORDANCE WITH API-2C, VALUES SHOWN ARE ACTUAL HOOK LOAD (WEIGHT OF BLOCK AND HOOK EXCLUDED).
 LOAD LINE BLOCK WEIGHT IS 1300 LBS.
 LOAD LINE (4 PART LINE): 1" 6X25 EIPS IWRC; 100,000 LB. BREAKING STRENGTH; 20,000 LB. WORKING STRENGTH.
 FAST LINE BLOCK WEIGHT IS 100 LBS.
 FAST LINE (1 PART LINE): 9/16" 19X7 EIPS IWRC; 25,000 LB. BREAKING STRENGTH; 5,000 LB. WORKING STRENGTH.
 ONBOARD LOAD = 1.5 X OFFBOARD LOAD.
 PEDESTAL REACTIONS ARE BASED ON THREE TIMES THE OFFBOARD LOAD PLUS DEAD LOAD

EBI CRANES

MODEL C60 FIXED BOOM CRANES (INTERNATIONAL METRIC UNITS)

MODEL C60-50 API LOAD CHART												BASIC CRANE WEIGHT: 11,867 KGS.	
REACH (METERS)	BOOM ANGLE (DEG.)	OFFBOARD LOAD (KGS.)	ONBOARD LOAD (KGS.)	REACH (METERS)	BOOM ANGLE (DEG.)	OFFBOARD LOAD (KGS.)	ONBOARD LOAD (KGS.)	REACH (METERS)	BOOM ANGLE (DEG.)	OFFBOARD LOAD (KGS.)	ONBOARD LOAD (KGS.)	API PEDESTAL REACTIONS (REACTIONS @ 3 X OFFBOARD RATED LOAD) (OTM = OVERTURNING MOMENT)	
3.0	76	23247	35187	7.6	58	12134	18518	12.2	35	7053	10898	MAXIMUM OTM = 316 TON METERS CORRESPONDING AXIAL FORCE = 29,964 KGS. MAXIMUM AXIAL FORCE = 83,506 KGS. CORRESPONDING OTM = 240 TON METERS	
4.6	70	17373	26376	9.1	51	9798	15014	13.7	23.5	6124	9503		
6.1	64	14220	21648	10.7	43.5	8255	12701	15.2	0	5398	8414		
MODEL C60-60 API LOAD CHART												BASIC CRANE WEIGHT: 12,578 KGS.	
REACH (METERS)	BOOM ANGLE (DEG.)	OFFBOARD LOAD (KGS.)	ONBOARD LOAD (KGS.)	REACH (METERS)	BOOM ANGLE (DEG.)	OFFBOARD LOAD (KGS.)	ONBOARD LOAD (KGS.)	REACH (METERS)	BOOM ANGLE (DEG.)	OFFBOARD LOAD (KGS.)	ONBOARD LOAD (KGS.)	API PEDESTAL REACTIONS (REACTIONS @ 3 X OFFBOARD RATED LOAD) (OTM = OVERTURNING MOMENT)	
3.0	78.5	22498	34065	9.1	58	9798	15014	15.2	31.5	5375	8380	MAXIMUM OTM = 322 TON METERS CORRESPONDING AXIAL FORCE = 27,343 KGS. MAXIMUM AXIAL FORCE = 81,973 KGS. CORRESPONDING OTM = 229 TON METERS	
4.6	73.5	16556	25152	10.7	53	8278	12735	16.8	22	4785	7496		
6.1	68.5	13336	20321	12.2	47	7076	10932	18.3	0	4286	6748		
7.6	63.5	11340	17327	13.7	40	6124	9503						
MODEL C60-70 API LOAD CHART												BASIC CRANE WEIGHT: 13,287 KGS.	
REACH (METERS)	BOOM ANGLE (DEG.)	OFFBOARD LOAD (KGS.)	ONBOARD LOAD (KGS.)	REACH (METERS)	BOOM ANGLE (DEG.)	OFFBOARD LOAD (KGS.)	ONBOARD LOAD (KGS.)	REACH (METERS)	BOOM ANGLE (DEG.)	OFFBOARD LOAD (KGS.)	ONBOARD LOAD (KGS.)	API PEDESTAL REACTIONS (REACTIONS @ 3 X OFFBOARD RATED LOAD) (OTM = OVERTURNING MOMENT)	
3.0	80	18756	28452	10.7	58.5	8187	12599	18.3	30	4263	6713	MAXIMUM OTM = 327 TON METERS CORRESPONDING AXIAL FORCE = 25,601 KGS. MAXIMUM AXIAL FORCE = 71,454 KGS. CORRESPONDING OTM = 194 TON METERS	
4.6	76	15808	24029	12.2	54	7053	10898	19.8	20	3833	6068		
6.1	72	12859	19607	13.7	48.5	6101	9469	21.3	0	3470	5523		
7.6	67.5	10659	16307	15.2	43	5375	8380						
9.1	63	9208	14129	16.8	37	4763	7462						
MODEL C60-80 API LOAD CHART												BASIC CRANE WEIGHT: 13,992 KGS.	
REACH (METERS)	BOOM ANGLE (DEG.)	OFFBOARD LOAD (KGS.)	ONBOARD LOAD (KGS.)	REACH (METERS)	BOOM ANGLE (DEG.)	OFFBOARD LOAD (KGS.)	ONBOARD LOAD (KGS.)	REACH (METERS)	BOOM ANGLE (DEG.)	OFFBOARD LOAD (KGS.)	ONBOARD LOAD (KGS.)	API PEDESTAL REACTIONS (REACTIONS @ 3 X OFFBOARD RATED LOAD) (OTM = OVERTURNING MOMENT)	
3.0	81.5	15921	24199	10.7	62.5	7575	11680	18.3	40	4241	6679	MAXIMUM OTM = 337 TON METERS CORRESPONDING AXIAL FORCE = 23,664 KGS. MAXIMUM AXIAL FORCE = 62,786 KGS. CORRESPONDING OTM = 161 TON METERS	
4.6	77.5	13290	20253	12.2	58.5	6668	10319	19.8	34	3810	6033		
6.1	74	11340	17327	13.7	54	5874	9129	21.3	27	3447	5489		
7.6	70	9911	15184	15.2	50	5330	8312	22.9	18	3130	5012		
9.1	66.5	8641	13279	16.8	45	4717	7394	24.4	0	2880	4638		
MODEL C60-90 API LOAD CHART												BASIC CRANE WEIGHT: 14,742 KGS.	
REACH (METERS)	BOOM ANGLE (DEG.)	OFFBOARD LOAD (KGS.)	ONBOARD LOAD (KGS.)	REACH (METERS)	BOOM ANGLE (DEG.)	OFFBOARD LOAD (KGS.)	ONBOARD LOAD (KGS.)	REACH (METERS)	BOOM ANGLE (DEG.)	OFFBOARD LOAD (KGS.)	ONBOARD LOAD (KGS.)	API PEDESTAL REACTIONS (REACTIONS @ 3 X OFFBOARD RATED LOAD) (OTM = OVERTURNING MOMENT)	
3.0	83.5	16375	24880	12.2	63.5	6280	9740	21.3	40	3275	5235	MAXIMUM OTM = 349 TON METERS CORRESPONDING AXIAL FORCE = 22,676 KGS. MAXIMUM AXIAL FORCE = 64,860 KGS. CORRESPONDING OTM = 150 TON METERS	
4.6	80.5	13540	20625	13.7	60	5545	8635	22.9	33.5	2935	4715		
6.1	77	10930	16715	15.2	56	4865	7615	24.4	27	2655	4295		
7.6	74	9230	14165	16.8	52	4355	6850	26	19	2425	3960		
9.1	70.5	7760	11950	18.3	48	3900	6170	27.4	0	2315	3780		
10.7	67	7245	11185	19.8	44	3560	5660						

IN ACCORDANCE WITH API-2C, VALUES SHOWN ARE ACTUAL HOOK LOAD (WEIGHT OF BLOCK AND HOOK EXCLUDED).
 LOAD LINE BLOCK WEIGHT IS 590 KGS.
 LOAD LINE (4 PART LINE): 1" 6X25EIPS IWRC; 45,354 KGS. BREAKING STRENGTH; 9,072 KGS. WORKING STRENGTH.
 FAST LINE BLOCK WEIGHT IS 45.4 KGS.
 FAST LINE (1 PART LINE): 9/16" 19X7 EIPS IWRC; 11,340 KGS. BREAKING STRENGTH; 2,268 KGS. WORKING STRENGTH.
 ONBOARD LOAD = 1.5 X OFFBOARD LOAD.
 PEDESTAL REACTIONS ARE BASED ON THREE TIMES THE OFFBOARD LOAD PLUS DEAD LOAD