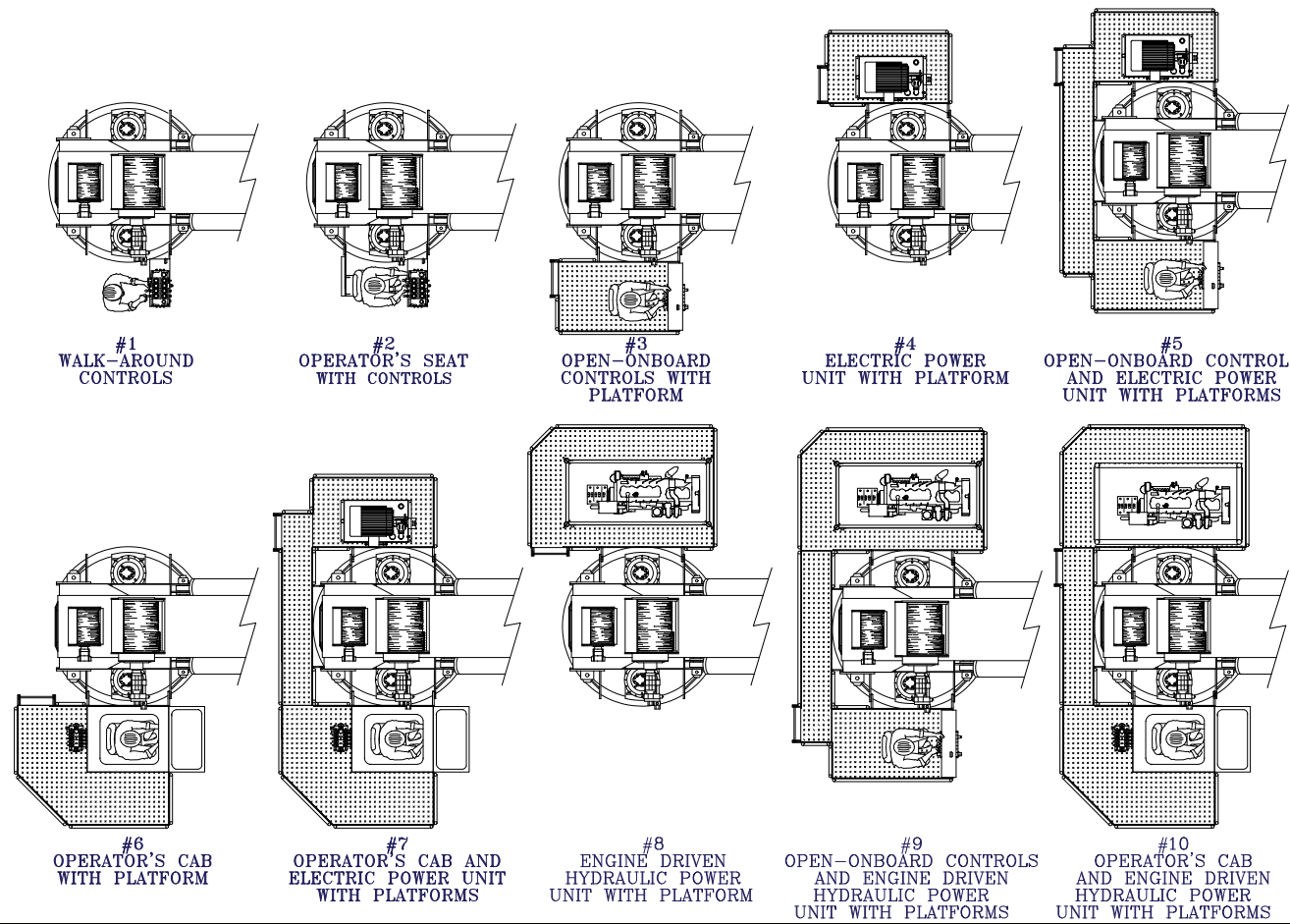


EBI CRANES

MODEL TC150-55-100 CRANES AVAILABLE CONFIGURATIONS



TAIL SWING CHART @ 0° BOOM ANGLE *

| CONFIGURATION | MAXIMUM TAIL SWING | CONFIGURATION | MAXIMUM TAIL SWING | CONFIGURATION | MAXIMUM TAIL SWING | CONFIGURATION | MAXIMUM TAIL SWING |
|---------------|--------------------|---------------|--------------------|---------------|--------------------|---|--------------------|
| 1 | 6'-4" Radius | 4 | 8'-4" Radius | 7 | 10'-2" Radius | 10 | 10'-8" Radius |
| 2 | 6'-4" Radius | 5 | 8'-4" Radius | 8 | 10'-8" Radius | *TAIL SWING VALUES MAY BE EXCEEDED DEPENDING UPON WINCH MOUNT OPTIONS | |
| 3 | 8'-4" Radius | 6 | 10'-2" Radius | 9 | 10'-8" Radius | | |



ELEVATING BOATS LLC

Corporate/EBI Liftboats, LLC. - 201 Dean Court - Houma, LA 70363

Phone: (985) 868-9655 Fax: (985) 868-9656

EBI Cranes, LLC. - 900 St. Bernard Pkwy. - Braithwaite, LA 70040

Phone: (504) 682-5245 Fax: (504) 682-5296

EBI Machining, LLC. - 40495 West I-55 Service Road - Ponchatoula, LA 70454

Phone: (985) 386-2053 Fax: (985) 386-2084

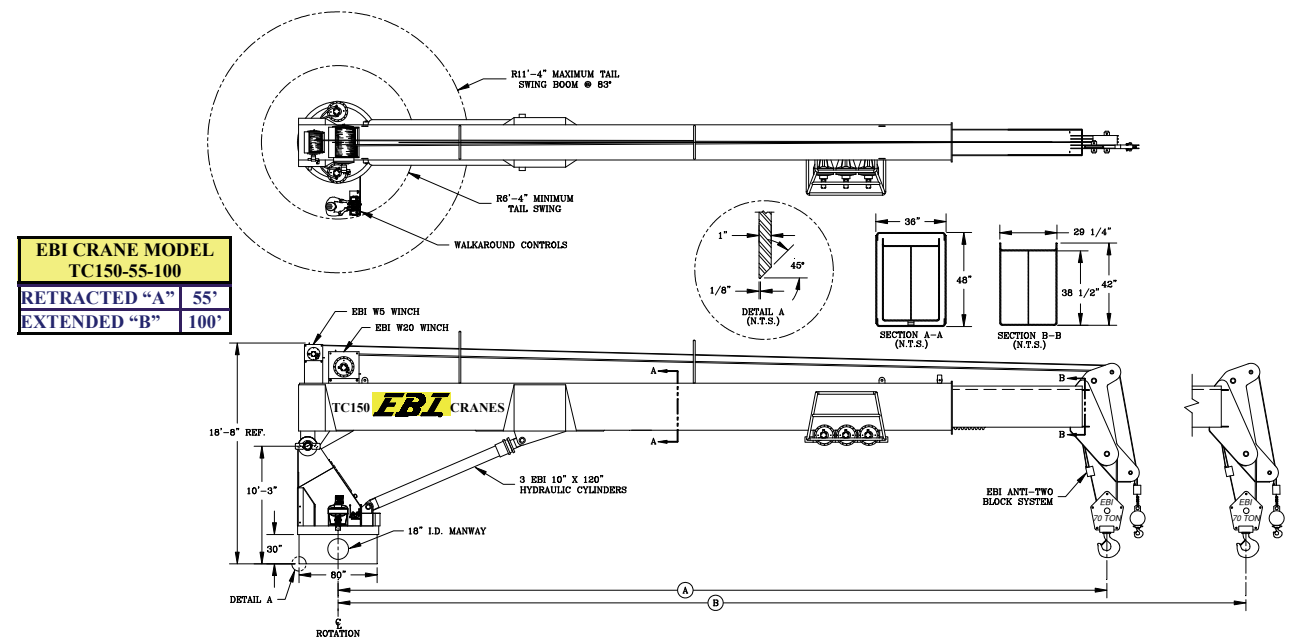
Email: postmaster@ebi-inc.com

Website: www.ebi-inc.com

08REV101911

EBI CRANES

MODEL TC150-55-100 TELESCOPIC BOOM CRANES



STANDARD EQUIPMENT:

EBI CRANES ARE LICENSED MONOGRAM CRANES UNDER API-2C SPECIFICATIONS.
EBI CRANES MEET OSHA REQUIREMENTS.
PLANETARY SWING MECHANISM WITH ADJUSTABLE MOUNT, HIGH TORQUE MOTOR AND AUTOMATIC SPRING APPLIED BRAKES.
DOUBLE HYDRAULIC SWIVEL FOR CONTINUOUS ROTATION.
INDUCTION HARDENED CHROME PLATED CYLINDER RODS.
18" I.D. MANWAY WITH BOLTED COVER.
THREE COLOR, SAFE LOAD INDICATOR GAUGE.
RACK AND PINION TELESCOPIC SYSTEM. THERE ARE NO INTERNAL BOOM CYLINDERS.
LOAD LINE WINCH: 2 SPEED MOTOR.
THREE COAT MARINE PAINT SYSTEM.
ANTI-FRICTION BEARINGS IN THE SHEAVES.
BRONZE BUSHINGS ON ALL PIVOTING POINTS.
LOAD TEST AT TWICE API OFFBOARD LOAD BEFORE SHIPPING.

EBI PRODUCTS AND SPECIFICATIONS ARE SUBJECT TO CHANGE WITHOUT NOTICE OR OBLIGATIONS.

OPTIONAL EQUIPMENT:

EBI CRANES TO MEET ABS AND USCG REQUIREMENTS.
CRANE CONTROL LOCATIONS
- PEDESTAL MOUNTED WALKAROUND
- REMOTELY LOCATED
- VARIOUS PLATFORM CONFIGURATIONS
- CAB MOUNTED JOY STICK TYPE
SOLAR/BATTERY POWERED BOOM BEACONS.
BOOM LIGHTING.
COMPLETE HYDRAULIC SAFETY SYSTEM DETECTING THE MOMENT INDUCED BY LOAD ON THE CRANE TO HELP PREVENT OVERLOAD CONDITION.
POWER UNITS CAN BE CRANE MOUNTED OR REMOTELY LOCATED.
POWER UNITS: ELECTRIC MOTOR, AIR MOTOR, OR DIESEL ENGINE (DETROIT DIESEL, CUMMINS, CATERPILLAR, DEUTZ AIR COOLED, ETC.).
DIESEL ENGINE STARTER SYSTEMS: ELECTRIC, AIR OR HYDRAULIC.
AIR/HYDRAULIC OIL HEAT EXCHANGER.
17-4 PH STAINLESS STEEL, HEAT TREATED, CHROME PLATED CYLINDER RODS.
440C STAINLESS STEEL, HEAT TREATED PINS.
FAST LINE WINCH DESIGNED FOR PERSONNEL HANDLING. WINCH CAPACITY IS 5000 LB. LINE PULL. (1000 LB. FOR PERSONNEL)
ANTI-TWO BLOCK SYSTEM.
EMERGENCY LOAD LOWERING SYSTEM.

EBI Cranes, LLC.



900 St. Bernard Pkwy. Braithwaite, LA 70040
Phone: (504) 682-5245 Fax (985) 386-2084
Email: cranes@ebi-inc.com Website: www.ebi-inc.com
1-800-843-2895

10REV101911



**MODEL TC150-55-100 TELESCOPIC BOOM CRANES
(U.S. CUSTOMARY UNITS)**

MODEL TC150-55-70 & TC150-55-85 LOAD CHARTS AVAILABLE UPON REQUEST.

| MODEL TC150-55-100 API LOAD CHART 55 FT. RETRACTED | | | | | | | | BASIC CRANE WEIGHT: 66,609 LBS. | |
|--|-------------------|----------------------|---------------------|-------------|-------------------|----------------------|---------------------|--|--|
| REACH (FT.) | BOOM ANGLE (DEG.) | OFFBOARD LOAD (LBS.) | ONBOARD LOAD (LBS.) | REACH (FT.) | BOOM ANGLE (DEG.) | OFFBOARD LOAD (LBS.) | ONBOARD LOAD (LBS.) | API PEDESTAL REACTIONS (REACTIONS @ 3 X OFFBOARD RATED LOAD) (OTM = OVERTURNING MOMENT) | |
| 10 | 78.0 | 109100 | 157600 | 35 | 50.0 | 56600 | 86100 | MAXIMUM OTM = 9,113,239 FT. LBS. CORRESPONDING AXIAL FORCE = 201,609 LBS. MAXIMUM AXIAL FORCE = 401,098 LBS. CORRESPONDING OTM = 4,554,307 FT. LBS. | |
| 15 | 73.0 | 100100 | 151350 | 40 | 43.0 | 51600 | 78600 | | |
| 20 | 68.0 | 83600 | 126600 | 45 | 35.0 | 47350 | 72225 | | |
| 25 | 62.0 | 71600 | 108600 | 50 | 25.0 | 44100 | 67350 | | |
| 30 | 56.0 | 63100 | 95850 | 55 | 0.0 | 42600 | 65100 | | |

| MODEL TC150-55-100 API LOAD CHART 100 FT. EXTENDED | | | | | | | | BASIC CRANE WEIGHT: 72,202 LBS. | |
|--|-------------------|----------------------|---------------------|-------------|-------------------|----------------------|---------------------|--|--|
| REACH (FT.) | BOOM ANGLE (DEG.) | OFFBOARD LOAD (LBS.) | ONBOARD LOAD (LBS.) | REACH (FT.) | BOOM ANGLE (DEG.) | OFFBOARD LOAD (LBS.) | ONBOARD LOAD (LBS.) | API PEDESTAL REACTIONS (REACTIONS @ 3 X OFFBOARD RATED LOAD) (OTM = OVERTURNING MOMENT) | |
| 10 | 83.5 | 87600 | 87600 | 60 | 53.0 | 25725 | 39788 | MAXIMUM OTM = 7,960,733 FT. LBS. CORRESPONDING AXIAL FORCE = 126,802 LBS. MAXIMUM AXIAL FORCE = 342,210 LBS. CORRESPONDING OTM = 3,563,433 FT. LBS. | |
| 15 | 80.5 | 74600 | 87600 | 65 | 49.5 | 23850 | 36975 | | |
| 20 | 78.0 | 60100 | 87600 | 70 | 45.5 | 22100 | 34350 | | |
| 25 | 75.0 | 52100 | 79350 | 75 | 41.5 | 20600 | 32100 | | |
| 30 | 72.0 | 46100 | 70350 | 80 | 37.0 | 19350 | 30225 | | |
| 35 | 69.0 | 40600 | 62100 | 85 | 32.0 | 18100 | 28350 | | |
| 40 | 66.0 | 36850 | 56475 | 90 | 26.0 | 17100 | 26850 | | |
| 45 | 63.0 | 35600 | 51600 | 95 | 18.0 | 16100 | 25350 | | |
| 50 | 59.5 | 30100 | 46350 | 100 | 0.0 | 15800 | 24900 | | |
| 55 | 56.5 | 27850 | 42975 | | | | | | |

IN ACCORDANCE WITH API-2C, VALUES SHOWN ARE ACTUAL HOOK LOAD (WEIGHT OF BLOCK AND HOOK EXCLUDED).
 LOAD LINE BLOCK WEIGHT IS 1700 LBS.
 LOAD LINE (8 PART LINE): 1" 6X25 EIPS IWRC; 100,000 LB. BREAKING STRENGTH; 20,000 LB. WORKING STRENGTH.
 FAST LINE BLOCK WEIGHT IS 100 LBS.
 FAST LINE (1 PART LINE): 9/16" 19X7 EIPS IWRC; 25,000 LB. BREAKING STRENGTH; 5,000 LB. WORKING STRENGTH.
 ONBOARD LOAD = 1.5 X OFFBOARD LOAD.
 PEDESTAL REACTIONS ARE BASED ON THREE TIMES THE OFFBOARD LOAD PLUS DEAD LOAD



**MODEL TC150-55-100 TELESCOPIC BOOM CRANES
(INTERNATIONAL METRIC UNITS)**

MODEL TC150-55-70 & TC150-55-85 LOAD CHARTS AVAILABLE UPON REQUEST.

| MODEL TC150-55-100 API LOAD CHART 17 METERS RETRACTED | | | | | | | | BASIC CRANE WEIGHT: 30,214 KGS. | |
|---|-------------------|----------------------|---------------------|----------------|-------------------|----------------------|---------------------|--|--|
| REACH (METERS) | BOOM ANGLE (DEG.) | OFFBOARD LOAD (KGS.) | ONBOARD LOAD (KGS.) | REACH (METERS) | BOOM ANGLE (DEG.) | OFFBOARD LOAD (KGS.) | ONBOARD LOAD (KGS.) | API PEDESTAL REACTIONS (REACTIONS @ 3 X OFFBOARD RATED LOAD) (OTM = OVERTURNING MOMENT) | |
| 3.0 | 78.0 | 49489 | 71489 | 10.7 | 50.0 | 25674 | 39055 | MAXIMUM OTM = 1260 TON METERS CORRESPONDING AXIAL FORCE = 91,450 KGS. MAXIMUM AXIAL FORCE = 181,938 KGS. CORRESPONDING OTM = 630 TON METERS | |
| 4.6 | 73.0 | 45406 | 68653 | 12.2 | 43.0 | 23406 | 35653 | | |
| 6.1 | 68.0 | 37921 | 57426 | 13.7 | 35.0 | 21479 | 32762 | | |
| 7.6 | 62.0 | 32479 | 49261 | 15.2 | 25.0 | 20004 | 30550 | | |
| 9.1 | 56.0 | 28623 | 43478 | 16.8 | 0.0 | 19324 | 29530 | | |

| MODEL TC150-55-100 API LOAD CHART 30.5 METERS RETRACTED | | | | | | | | BASIC CRANE WEIGHT: 32,750 KGS. | |
|---|-------------------|----------------------|---------------------|----------------|-------------------|----------------------|---------------------|--|--|
| REACH (METERS) | BOOM ANGLE (DEG.) | OFFBOARD LOAD (KGS.) | ONBOARD LOAD (KGS.) | REACH (METERS) | BOOM ANGLE (DEG.) | OFFBOARD LOAD (KGS.) | ONBOARD LOAD (KGS.) | API PEDESTAL REACTIONS (REACTIONS @ 3 X OFFBOARD RATED LOAD) (OTM = OVERTURNING MOMENT) | |
| 3.0 | 83.5 | 39736 | 39736 | 18.3 | 53.0 | 11669 | 18048 | MAXIMUM OTM = 1101 TON METERS CORRESPONDING AXIAL FORCE = 57,517 KGS. MAXIMUM AXIAL FORCE = 155,226 KGS. CORRESPONDING OTM = 493 TON METERS | |
| 4.6 | 80.5 | 33839 | 39736 | 19.8 | 49.5 | 10819 | 16772 | | |
| 6.1 | 78.0 | 27262 | 39736 | 21.3 | 45.5 | 10025 | 15582 | | |
| 7.6 | 75.0 | 23633 | 35994 | 22.9 | 41.5 | 9345 | 14561 | | |
| 9.1 | 72.0 | 20911 | 31911 | 24.4 | 37.0 | 8778 | 13711 | | |
| 10.7 | 69.0 | 18419 | 28169 | 26 | 32.0 | 8211 | 12860 | | |
| 12.2 | 66.0 | 16716 | 25618 | 27.4 | 26.0 | 7757 | 12180 | | |
| 13.7 | 63.0 | 16149 | 23406 | 29 | 18.0 | 7303 | 11499 | | |
| 15.2 | 59.5 | 13654 | 21025 | 30.5 | 0.0 | 7167 | 11295 | | |
| 16.8 | 56.5 | 12633 | 19494 | | | | | | |

IN ACCORDANCE WITH API-2C, VALUES SHOWN ARE ACTUAL HOOK LOAD (WEIGHT OF BLOCK AND HOOK EXCLUDED).
 LOAD LINE BLOCK WEIGHT IS 771 KGS.
 LOAD LINE (8 PART LINE): 1" 6X25 EIPS IWRC; 45,359 KGS. BREAKING STRENGTH; 9,072 KGS. WORKING STRENGTH.
 FAST LINE BLOCK WEIGHT IS 45.4 KGS.
 FAST LINE (1 PART LINE): 9/16" 19X7 EIPS IWRC; 11,340 KGS. BREAKING STRENGTH; 2,268 KGS. WORKING STRENGTH.
 ONBOARD LOAD = 1.5 X OFFBOARD LOAD.
 PEDESTAL REACTIONS ARE BASED ON THREE TIMES THE OFFBOARD LOAD PLUS DEAD LOAD